



YOUR TRUSTED **PARTNER**

PROVIDING WINNING SCIENCE, TECHNOLOGY,
HEALTH AND EDUCATION **SOLUTIONS ACROSS AFRICA.**

THE VALUES WE LIVE BY



INTEGRITY

Integrity means that our actions are consistent with what we know is right. We make ethical decisions in spite of the cost.



EXCELLENCE

Excellence means we pursue continuous improvement in everything we do.



OPTIMISM

Optimism means that there is good in every situation and we never give up.



ENTREPRENEURSHIP

Entrepreneurship is the empowerment to identify, create and action innovative opportunities that we believe in.



PASSION

Passion is the love we have for the work we do. It's what drives us and inspires us to give of our best each day. It provides the inspiration we need to accomplish our goals.

Our values underpin everything we do. They are our foundation. United by our common values, we all pull in the same direction, we share the same code. They drive our vibrant culture, guide us and hold us accountable.



CONTENTS

WHO WE ARE	02
INSTRUMENTS	03
FURNITURE	17
OUR RANGE	18
GLASSWARE	19
PLASTICS	24
FILTRATION	27
HARDWARE	28
SERVICING	31
PRODUCT PORTFOLIO	32



LASEC® - WHO WE ARE

For over 70 years Lasec® has been supplying quality, dependable solutions and services to the laboratory and scientific community.

With more than 80 scientifically trained and qualified personnel, we bring years of practical laboratory, engineering and teaching experience to your aid. One of the first laboratory suppliers to expand beyond South Africa's borders, we have been meeting our customers' needs throughout Africa for over 20 years.

OUR CUSTOMER COMMITMENT

PRODUCT RANGE:

Our extensive sourcing network and long-term partnerships with leading international manufacturers, coupled with our ability to provide customised solutions through our own local manufacturing facility makes Lasec® the one-stop shop to meet your requirements. Our buying power means you can get the highest quality product at the most competitive cost.

With warehousing facilities in Cape Town, Johannesburg and Durban we have a broad range of products, including consumables and instruments which we hold in stock. These extensive stock-holding facilities reduce delivery times of key products across our markets.

LOGISTICS

Supported by a state-of-the-art supply chain management system and partnering with reliable logistics service providers, we can ensure efficient in-bound and out-bound shipments. Our extensive stock-holding facilitates reduced delivery times of key products.

TRAINING

On-site installations are accompanied by customer training on correct usage and maintenance of equipment. Our scientists are up-to-date on technology and trends in the industry, allowing us to offer informative and practical training courses, many of which are CPD-accredited.

QUALITY ACCREDITATION

Lasec® quality promises are backed by international accreditation: ISO9001 for good business practice, ISO13485 for our diagnostic kit facility and ISO17025 (SANAS) for volume and mass metrology.



LASEC® INSTRUMENTS

Lasec® can provide assistance with IQ, OQ and PQ protocol completion after installation of a new device, after moving, after repairs, or after any other activity, in order to meet regulatory requirements.

Our portfolio includes a wide range of instrumentation, backed by technical expertise, to ensure optimal performance and accuracy to international standards.

Lasec® offers CPD accredited training and workshops across a broad range of topics, including but not limited to hazardous material storage, correct use of pipettes and water saving solutions.

Our instrument range includes solutions for the following:

- **Temperature:** From cryotanks and ultralow freezers to ovens, incubators and furnaces
- **Safety Products:** Biosafety cabinets, fume hoods and safety storage cabinets
- **Liquid and Mass Metrology:** Balances and scales, pipettes and automated liquid handling systems
- **Electrochemistry:** From water purification systems to measurement of pH, conductivity and titrator solutions
- **Sample Preparation:** Everything needed for a standard laboratory including hotplate stirrers, sample concentrators and homogenisers
- **Biotechnology:** A specialised portfolio covering standard PCR techniques to highly sophisticated microfluidics and gel documentation
- **Manufacturing and production:** A comprehensive range of online, in production weighing and weight control equipment including checkweighers, platform and ramp scales. Industrial chillers used for controlled cooling of products, mechanisms and factory machinery across a wide range of industries.
- **Application specific equipment:** For environmental analysis and physiology research

IQOQPQ SERVICES PROVIDED INCLUDE:

- **Installation Qualification (IQ):** Documented verification that equipment is installed to manufacturers' recommendations.
- **Operation Qualification (OQ):** Documented verification that equipment (as installed) is operating as intended to manufacturers' specifications.
- **Performance Qualification (PQ):** Documented verification that equipment can perform effectively and reproducibly, based on approved manufacturers' specifications.
- **Re-Qualification (OQ or OQ/PQ):** Documented verification that equipment continues to operate as specified by the manufacturer. Performed 1 year after an initial IQ, OQ, PQ has been completed, or according to SOP requirements.

CLIMATE CHAMBERS

Climate chambers, compliant to ICH, GMP and FDA provide the environmental control and flexibility to meet the evolving needs of testing.



FLOOR-STANDING CLIMATE CHAMBERS

- Wide variety of chambers available - stability chambers, stress testing chambers and models complying to the ICH guidelines
- Day night simulation and photo stability testing possible with optional light modules
- Complies with the strict requirements of DIN 12880:2007-05
- Each unit is safety-tested and bears the CE mark

WALK-IN STABILITY CHAMBERS

- ICH, GMP, WHO, FDA compliant
- Modular customisable designs per project specifications available from 5000lt to more than 40 000lt
- Uniformity: $\pm 1^{\circ}\text{C}$ and $\pm 2\%\text{RH}$
- Password protected digital controller with 21 CFR Part 11 compliant back-up data recording
- Ethernet connection to BMS and EMS systems
- Locally based, factory trained service engineers capable of installing and servicing systems
- Preventative maintenance options included
- IQOQPQ validation on chambers and software included
- SANAS and ISO calibration certificates included

REACH-IN STABILITY AND PHOTOSTABILITY TESTING CHAMBERS

- Developed to simulate and automatically reproduce the conditions required by the ICH Q1B Option 2 guideline for photostability testing
- Both UV and Visible lights are independently controlled and can be programmed by % or intensity
- Compliant and recognised by ICH, FDA, GMP and other leading industry standards
- FDA 21 CFR Part 11 compliant software
- Ready to use, with no assembly needed. The design is future-proof with configurable interior for the most efficient use of available storage space and content dimensions
- Configurable high/low temperature and humidity alarms, as well as email notifications ensure content protection.

SAFETY STORAGE CABINETS

There are many dangers involved when storing and handling flammable and hazardous liquids in the workplace. When these dangers are underestimated fatal incidences can occur. Compliant to international (EN14470-1) as well as local (SANS54470-1) standards, high quality safety storage cabinets ensure maximum safety with respect to storage of hazardous liquids.

FIRE SAFETY STORAGE CABINETS

- Fire resistant for 90 minutes in accordance with EN14470-1 and SANS5440-1 safety requirements
- Immediate automatic closing of doors and drawers by integral thermal release system in the event of a fire
- Flexible interior equipment provides customised storage solution
- Underbench, upright, single or double door cabinet size options available, to fit any new or existing laboratory layout

ACID AND ALKALI SAFETY STORAGE CABINETS

- Safe storage of acids, alkalis and aggressive hazardous materials
- Flexible interior equipment options available
- Underbench, upright, single or double door cabinet size options available, to fit any new or existing laboratory layout
- Not suitable for flammable liquid storage

COMBINED FLAMMABLE AND CORROSIVE LIQUID STORAGE

- Approved 2-in-1 storage of hazardous materials in accordance with EN14470-1 (Type 90) and SANS5440-1 and other chemicals (acids and alkalis)
- Left-hand side of the cabinet is fire resistant for 90 minutes in accordance with EN14470-1 and SANS5440-1 safety requirements
- Right-hand side of the cabinet safely stores acids and alkalis and aggressive hazardous materials
- Flexible interior equipment provides customised storage solution



The product images shown are for illustration purposes only and may not be an exact representation of the product.

E&OE

FRIDGES AND FREEZERS

Quality fridges and freezers can lower the risks involved in production, that cannot be eliminated through testing. A variety of models, with excellent performance in temperature stability and uniformity, heighten product consistency and ensure safety for human consumption.



FRIDGES

- Temperature range: -2/20°C, 2/20°C
- Digital display
- Acoustic and visual temperature alarms on selected models
- Solid or glass door
- Internally and externally spark free
- Extra sensor "E Sensor" for temperature reference in the storage compartment
- Optional data logger

FREEZERS

- Temperature ranges: -25/-5°C, -35/-5°C, -40/-5°C, -86/-60°C
- Digital display
- Acoustic and visual temperature alarms on selected models
- Internally and externally spark free
- Extra sensor "E Sensor" for temperature reference in the storage compartment
- Optional data logger

ULTRALOW TEMPERATURE FREEZERS (-86°C)

- Large capacity 668lt
- Easy-In/Easy-Out door latch for one-handed operation, positive seal against gasket
- Dual compressors run high and low stage CFC Free refrigerants to maintain temperature uniformity
- Energy Saver Cascade Cooling System
- Universal keyed door lock offers added security
- CO₂ back-up systems available

The product images shown are for illustration purposes only and may not be an exact representation of the product.

E&OE

BALANCES AND SCALES

Specialised weighing systems suitable for Research and Development; Quality Control and Production (including formulation; filling and packaging)

CHECKWEIGHERS

- Weigh products quickly and accurately for precise control of packaged products in accordance with valid industry regulations
- Modular design enables customisation and a flexible configuration to meet specific product requirements
- Compliant to NIH – software enables setting of parameters to precisely meet appropriate regulations on control of packaged goods
- Monitor the production process on-line, save the weighing data, generate reports inclusive of weighing statistics, quantitative statistics as well as production line failures and stoppages



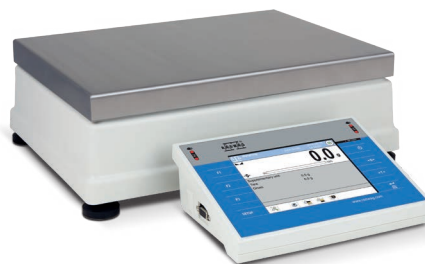
ULTRA-MICRO, MICRO & SEMI MICRO BALANCES

- Weighing accuracy and repeatability compliant to USP regulations with $sd \leq 1d$ combined with USP regulations conformity (Section 41 and 1251)
- Designed for the most demanding applications including formulation functions
- Fully automatic formulation control guided mathematically by the balance, and full traceability in data storage and printout of data
- SQC tablet control functions for batch verification processes
- Programmable reference sample control functions
- Windows embedded operating systems
- Data safety ensured with ALIBI memory designed to provide protection and automatic recording of measurements
- WiFi module offers wireless transfer of data



PRECISION BALANCES

- MonoBLOCK™ technology enables precision weighing of heavy loads with readability of 0.01g at capacity of 15kg and readability of 0.1g at capacity of 50kg
- Housing made of ABS thermoplastic polymer and stainless steel weighing pan effectively protecting the weighing sensor and electronics against chemicals, water, dust and damage.
- Compliant to 21 CFR Part 11 guaranteeing data safety and limiting access by unauthorised users
- Wireless communication between the balance and the terminal ensures safe operation of the instrument in a fume cupboard, isolator or compounding hood when weighing toxic substances



The product images shown are for illustration purposes only and may not be an exact representation of the product.

E&OE

PIPETTES



AIR DISPLACEMENT PIPETTES - ELECTRONIC

- Aspirate at a push of a button with four pipetting modes: Pipette, Reverse, Repetitive and Mix
- Fill a 96-well plate in a single pipetting cycle using repetitive mode
- Single and Multichannel models available
- Volume ranges from 0.1 to 1 200 μ l



AIR DISPLACEMENT PIPETTES - MANUAL

- FULLY AUTOCLAVABLE with lockable volume setting and adjustable tip ejector button
- Ergonomic design for reduced pipetting strain
- Single and Multichannel Models available
- Volume ranges from 0.1 μ l to 10ml



POSITIVE DISPLACEMENT PIPETTES

- Avoid cross-contamination while easily pipetting samples that are viscous, corrosive or have low vapour pressures
- Minimal maintenance with no re-calibration required
- Available from 1 μ l to 12.5ml



96- AND 384-WELL PLATE FILLERS

- Fast Microplate Pipetting System
- Fill an entire 96-well plate in less than 10 seconds, or a 384-well plate in less than one minute.
- Ideal for high-throughput and time sensitive analysis (e.g. Drug screening, enzymatic assays, NGS etc)



PIPETTE FILLERS

- Motorised pipette filler
- For all plastic and glass pipettes from 1 to 100ml
- Continuously adjustable speed: 25ml in 4 seconds
- Environmentally friendly NiMH battery for 8 hours operation
- Precise and smooth dosing button control



SAFE ASPIRATION STATION

- Quiet, Compact and Flexible closed aspiration system
- Adjustable Aspiration Speeds
- Aspiration Handle accommodates many types of pipettes
- In-line hydrophobic filter to trap hazardous aerosols
- Parts in contact with liquid are autoclavable

OVENS

- Compliant to the strict requirements of DIN 12880:2007-05
- Each unit is safety-tested and bears the CE mark

VACUUM OVENS

- Temperature range ambient +5°C to +200°C
- State-of-the-art control technology
- Short heating up times, high precision temperature control and turbo drying
- Noise-insulated vacuum pump module for installation in a chamber below the oven
- 3 model sizes (29lt, 49lt and 101lt)



UNIVERSAL OVENS

- Temperature range ambient +5°C to +300°C
- Natural convection or forced air circulation by quiet air turbine, adjustable in 10% steps



MUFFLE FURNACES

- Lift or flap doors
- Temperature ranges up to 1100°C, 1200°C or 1300°C maximum temperatures
- All insulation materials on all models are classified as non-carcinogenic and completely abide by the TRGS 619 requirements
- Variety of volumes available, ranging from 1lt to 40lt
- Variety of controllers available to meet specific application requirements
- Optional software includes features to protect process information security



The product images shown are for illustration purposes only and may not be an exact representation of the product.

E&OE

INCUBATORS

- Compliant to the strict requirements of DIN 12880:2007-05
- Each unit is safety-tested and bears the CE mark
- Optimum view of sensitive loads through wide-area interior glass doors
- Various sizes available

STANDARD INCUBATORS

- Temperature range ambient to +80°C
- Natural convection or forced air circulation

COMPRESSOR-COOLED INCUBATORS

- Temperature range -12°C to 60°C (size dependent)
- Due to the finely adjusted control technology, temperatures exactly reach the set point values without energy-intensive bursts of power

PELTIER-COOLED INCUBATORS

- Temperature range from 0°C to 70°C
- Peltier technology not only contributes to climate protection, but it also achieves an additional decrease in operating costs of up to 90% compared to compressor technology.
- Optional lights available for day / night simulation



VACUUM PUMPS

- Options available for corrosive and non-corrosive gases and vapours
- Contamination-free pumping and evacuation
- High flow-rate even approaching ultimate vacuum
- Whisper quiet and low vibration
- Exceptionally long diaphragm life and maintenance-free drive system for low lifetime costs

MELTING POINT APPARATUS

- Analogue and digital versions available
- Measure up to 3 samples simultaneously
- Accessory printer to print results directly from the unit
- 8GB storage capable of storing up to 300 melts files with video
- Data easily transferred to computer via USB stick

PLATE READERS (MULTIMODE)

- Full spectrum of light absorbance and fluorescence in 1nm increments
- Rugged plate shaker for PRION assay
- Market-leading Patented LVF Monochromator Technology
- Industry-benchmark in Neuro-degenerative disease research

The product images shown are for illustration purposes only and may not be an exact representation of the product.

E&OE



GLASSWARE WASHERS

- Compact and robust stainless steel design
- Digital touch screen display
- Micro-processor controlled wash cycles
- A variety of sizes, models and accessories available to suit any laboratory's needs



HEATING AND COOLING THERMOSTATS

- Available for internal and external circulation applications
- Wide temperature range available from various models allowing for temperatures of -100°C up to 320°C
- Variety of accessories and heat transfer liquids available



FREEZE DRYERS

- Laboratory, Pilot and Production Scale Freeze dryers available
- Innovative, reliable sensor technology to avoid unwanted thawing / collapse
- Automatic determination of the freezing point for secure process control
- Wireless sample temperature measurement for easy handling with improved sensor technology
- Online imaging provides greater transparency in freeze drying and can be linked to the process documentation
- Possible to precisely determine drying rate and end of drying via online-weighing of product
- Option for simultaneous and uniform freezing of vials at a push of a button



MICROSCOPES

- Compound and Stereo Microscope options
- Available with Binocular or Trinocular heads
- Infinite Plan Objectives and LED Illumination
- Fluorescence, Darkfield and Phase Contrast options available
- Choice of Cameras for Image Analysis



BIOSAFETY CABINETS

- EN 12469 & CE certified
- Supply and exhaust H14 HEPA filters are 99.995% efficient
- HEPEX Zero Leak Airflow System
- Energy Saver (ES) DC/ECM Motor
- Superior construction - Monolithic 16/18 Gauge, Type 304 Stainless Steel Welded



LAMINAR FLOW BENCHES

- Achieve clean airflow required per ISO 14644-1 suitable for the preparation of injectable drugs, IV solutions and tissue culture
- HEPEX™ Zero Leak Air Flow System
- True laminar airflow with a unique blower system which extends HEPA filter life
- Smooth white formica or stainless-steel work surfaces available



COMPOUNDING HOODS

- Powdersafe™ Ductless Enclosure
- Safe and effective weighing environment for toxic compounds and/or liquid chemicals
- Operator protection by capture of particulate in HEPA filtration without sacrificing balance stability
- Constructed from materials that offer exceptional durability as well as ease of cleaning.
- Factory leak tested, certified and shipped fully assembled, ready for simple installation on any countertop
- Sizes range from balance enclosures to full-scale, large batch sampling enclosures

ROTATIONAL VACUUM CONCENTRATORS

- Efficient concentration of DNA/RNA-samples, proteins etc.
- No sample foaming, minimal sample loss
- Simultaneous, multiple sample drying
- Safe and simple solvent recovery
- RVC-series is used in combination with different cooling traps and vacuum pumps



The product images shown are for illustration purposes only and may not be an exact representation of the product.

E&OE

AUTOCLAVES

- 85l or 105l models are SANS 347:2012 compliant
- Rapid cooling systems shorten cycle time
- Optional vacuum drying versions available
- RS-232 or Printer options available



ORBITAL SHAKERS

- Speed range of 30-300rpm
- Cradle system to secure flasks is available for selected models
- Various sizes of orbital shakers available
- Able to accommodate various flask sizes



HOTPLATE STIRRERS

- Available with either a coated aluminium or chemically resistant ceramic plate
- Stirring capacity of up to 20l
- Heating of samples up to a maximum temperature of 500°C
- Options of single or multiple-place models with up to 15 positions
- 10 year warranty offered on selected items



OVERHEAD STIRRERS

- Wide range available suitable for both lab and industry applications
- Adjustable speeds of up to 2000rpm
- Capable of processing samples of up to 200l
- Can be used with low, medium or high viscosity samples
- Overload and overheating protection



MAGNETIC STIRRERS

- Available with aluminium alloy, robust stainless steel, or chemically resistant ceramic top
- Adjustable stirring speed range between 50-2000rpm
- Maximum stirring capacity of 30l
- Options of single or multiple-place models with up to 15 positions
- 10 year warranty offered on selected items

The product images shown are for illustration purposes only and may not be an exact representation of the product.

E&OE



PH METERS

- Ideal for quality control and GLP applications
- Up to 3 decimal place resolution
- 1, 2 or 3 point pH calibration
- Automatic or manual buffer recognition
- Datalogger



VORTEX MIXER

- Powerful motor for INSTANT vortexing
- Continuous or "touch" operation
- Q-Drive™ dynamic balancing system
- Variable speed from 200 to 3200 rpm
- Wide variety of accessories



ROTARY EVAPORATORS

- Simple, counterbalanced lift mechanism
- Equipped with a vacuum release and a continuous feed system to facilitate non-stop operation
- With cold finger, vertical or diagonal condensers (Peltier)
- Plastic-coated glassware is available to reduce the risk of injury should the glassware break during use
- Water or oil bath, vacuum pump and recirculating coolers available separately



REFRACTOMETERS

- Measurement range: 1.26 - 1.70 refractive index; 0 - 95 % BRIX
- Dual electronic peltier temperature control from 10°C to 120°C
- Ethernet port for network connection therefore possible to securely save measurements directly to your network/server
- 21 CFR Part 11 compliant



DENSITY METERS

- Capable of 2, 3, 4 or more multiple measurements with standard deviation, mean, min and max reading for true cGLP/GMP compliance
- Full 21 CFR Part 11 instrument level compliance
- Intuitive Windows® based navigation architecture
- Ethernet port for network connection therefore possible to securely save measurements directly to your network/server



POLARIMETERS

- Six Standard Wavelengths
- TempTrol electronic heating and cooling
- Intuitive Windows® based navigation architecture
- Ethernet port for network connection therefore possible to securely save measurements directly to your network/server
- 21 CFR Part 11 compliant

MILLS

- Speed range of 50 – 6000rpm
- Integrated speed control with LED display for speed indication and status messages
- Integrated heating, overload and blockage protection
- Hardened stainless steel grinding attachments for either brittle or fibrous samples
- Blade and hammer attachments
- Sieves in different mesh sizes from 0.2mm – 6mm



HOMOGENISERS

- Lab scale to industrial scale
- Capable of processing sample volumes between 0.05ml – 40 000ml
- Suitable for wet milling and dispersing of solids, fibres, stringy materials, tissues and cells into fluids and polymers
- Dispersing probes are easily interchangeable
- Rotational speed stability option to protect against viscosity changes
- Specific probe designed to homogenise tablets is available
- Software available



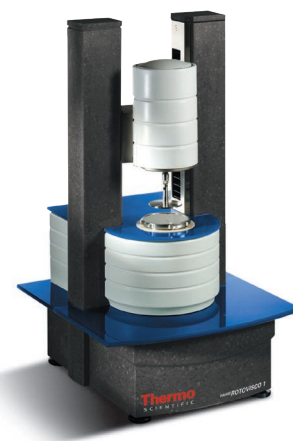
HEATING MANTLES

- Controlled and non-controlled models available
- With powder-coated aluminium or chemically resistant polypropylene outer casing
- Available in various sizes to accommodate flasks from 10ml to 5000ml
- Available in single or multi-version with three or six places
- Stirring function is optional



BOTTLETOP BURETTES AND DISPENSERS

- Bottle-top dispensers are autoclavable
- Recirculation valve reduces reagent loss
- Genius2 and Simplex2 models dispense variable volumes between 0.2 – 100ml
- Piccolo dispensers dispense fixed volumes of liquids from 0.1 – 2ml
- Digital burettes available in 25ml and 50ml versions



VISCOMETERS AND RHEOMETERS

- Modular and easy to use with intelligent user guide.
- Applications range from simple viscosity determination to complex rheological investigations on samples ranging from low viscous liquids to stiff pastes and semi-solids.
- Used as a standalone or as fully software controlled unit.
- 21 CFR Part 11 compliant option available

The product images shown are for illustration purposes only and may not be an exact representation of the product.

E&OE



WATER PURIFICATION SYSTEMS

- Utilises a range of technologies including reverse osmosis, filtration, irradiation and ion exchange to achieve desired levels of purity
- Various models available to meet the needs of specific applications and volume requirements
- Easy to use and simple to maintain



WATERBATHS

- Digital
- Temperature range from ambient up to +95°C
- Optional peltier cooling unit available to achieve temperatures as low as 10°C
- Optional shaking device available



ULTRASONIC BATHS

- Deep-cleaning activity removes stubborn contaminants from almost any surface
- Volumes range from 1.9 – 20l
- With mechanical or digital timer
- With or without heater
- Accessories available include wire mesh basket, solid stainless steel tray, perforated tray, support racks and beaker covers



CENTRIFUGES

- Refrigerated or non-refrigerated
- Large easy-to-view control panel with digital display
- Control knobs for selecting speed/RCF, running time and temperature
- Selectable acceleration and deceleration rates
- Automatic rotor recognition
- Imbalance sensor with safety shutdown mechanism



SPECTROCOLORIMETERS

- Automated colour analysis
- Quantify the colour of solutions precisely and objectively according to internationally recognised standards: EP, USP and CP Colour Series
- Remote Calibration Service available
- ISO Certified with GLP features



SPECTROPHOTOMETERS

- Ideal for quality control applications
- Double beam spectrophotometer with highly stable optics
- Variable spectral bandwidth 0.5, 1, 2, 4, 5nm
- PC software includes preloaded methods for DNA/RNA and protein analysis, extensive post-measurement tools, unlimited results saving and easy export of data
- Conforms to European Pharmacopeia requirements



LABORATORY FURNITURE

Lasec® is able to assist in the design and installation of laboratory furniture in facilities throughout Africa. We prefer to work in collaboration with end-users and/or in partnership with architects to develop a fully functional laboratory environment that is dedicated to your particular application and/or field of study. We have different options available and can partner with a leading international manufacturer, Waldner, to provide your solution. Alternatively, we offer a range of laboratory solutions from our own local manufacturing facility. We have access to a wide range of assembly/surface materials to ensure full chemical- and/or microbiological-compatibility. Options to personalise your laboratory are also available.

An important aspect of our design philosophy is the recommended incorporation of equipment to ensure that your new laboratory provides a safe working environment meeting all necessary safety standards. Some considerations are detailed below:

AIR PROTECTION CABINETS

Incorporate the correct type of air protection solutions (ducted and/or ductless) into the design. These can include fume cupboards, laminar flow or biological safety cabinets that meet the most stringent local and international standards (NRCS approved, TUV EN12469 and NSF/ANSI49). Our service team are factory trained, NSF accredited, and have highly specialised equipment to validate cabinets to these standards.

SAFETY STORAGE CABINETS

The use of quality fire-retardant cabinets directly within the workspace (compliant to the EN14470-1 and SANS54470-1 standards) drastically reduces the transportation of hazardous materials, and ensures that the facility meets all fire and other safety legislation.

VACUUM LOCAL AREA NETWORKS

VACUU-LAN® vacuum networks make it possible to supply several different applications with just one centralised pump. Solutions are designed to allow for versatility and chemical resistance and include built-in check valves to protect against contamination or interference from adjacent applications.

LABORATORY BALANCE TABLES

Ensure that the design includes stable surfaces for specific laboratory balances. We can supply dedicated solutions for balances that can measure down to 10^{-6} g.

SAFETY EQUIPMENT

The provision of safety showers and/or eye-wash stations should form an integral part of any laboratory design.



EDUCATION

Lasec® believes in enabling and empowering our future scientists and leaders to reach their full potential. We proudly partner with corporates and non-profit organisations to make discovery possible for all school children. Our kits are curriculum aligned including CAPS and with up to 65% of our kit range manufactured locally in our ISO certified KZN factory, we provide the highest quality products optimised for classrooms across Africa.

DIAGNOSTICS

Through our collaboration with global diagnostics companies, health ministries and international non-governmental organisations, we have developed solutions to meet the growing need for standardised collection and easy transportation of biological samples from remote and resource-limited areas to testing facilities.

CONSUMABLES

Extensive stock-holding ensures availability of essential consumables for everyday applications. We offer a wide selection of laboratory consumables, from affordable disposable pipettes, beakers, funnels and petri dishes to glassware suited for calibrated volumetric measures. Regardless of your budget and application we have the right basket to serve your needs.



VOLUMETRIC GLASSWARE

All volumetric glassware requires precise and accurate production and calibration conditions. Lasec® showcases products which adhere to production standards in accordance with ISO, DIN, ASTM and USP.

Our supplier **Glassco** recently launched QR coded volumetric flasks, meeting both ASTM and ISO standards. This is available for individual and batch certified volumetric flasks. All you have to do is scan the **QR CODE** from your mobile phone with a QR code scanner (such as NeoReader). Not only will it give you the certificate of calibration, individual or batch, but also the certificate of compliance and the product user manual.



QR-CODED SCAN YOUR CALIBRATED GLASS

GET

SCAN YOUR VOLUMETRIC FLASK

Please download **NEO READER SCANNER** and scan your Volumetric Flask with your smart phone

SET

SELECT CERTIFICATE INDIVIDUAL/BATCH CONFORMITY OR USER MANUAL

Website will open with choice of batch or individual certificate and please type Serial No. from Flask

GO

PRINT OR SAVE YOUR CERTIFICATE

Your certificate is now ready to be saved or printed at the time of your audit, before audit or after audit

**AVAILABLE AT YOUR
FINGERTIPS!**

USP | DIN | ASTM | ISO

BOTTLES

DROPPING

- Class A Borosilicate 3:3 glass
- Amber or clear
- With rubber teat or glass stopper

MCCARTNEY

- Soda Lime glass
- Narrow or wide neck
- Autoclavable
- Aluminium screw cap

MEDIA

- Class A Borosilicate 3:3 glass
- Graduated
- Amber or clear
- Autoclavable
- Round or square
- Blue polypropylene GL 45 screw cap and pouring ring

REAGENT

- Class A Borosilicate 3:3 glass
- Amber or clear
- Narrow or wide neck
- With glass or plastic stopper

SPECIFIC GRAVITY BOTTLES / PYCNOMETERS

- Class A Borosilicate 3:3 glass
- Adjusted or unadjusted
- With or without ground joint thermometer

WEIGHING

- Class A Borosilicate 3:3 glass
- With ground in stopper



VIALS

PILL

- With stoppers

VACCINE

- Clear or amber
- Rubber stoppers or aluminium seals available
- Crimpers available



DISHES

CRYSTALLISING

- With or without spout

PETRI

- Soda Lime glass



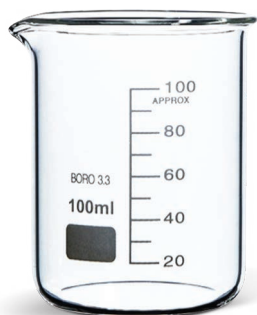
MICROSCOPE

SLIDES

- Single or twin frosted
- Ground, cut or bevelled edges available

COVERSLIPS

- Chemically resistant Borosilicate 3:3 glass
- Colourless and clear, suitable for fluorescence microscopy



BEAKERS

- Class A Borosilicate 3:3 glass
- Low or tall form
- Spouted
- Graduated



CRUCIBLES

- Silica, Soda-lime or Class A Borosilicate 3:3 glass
- Low or tall form
- Glazed options available
- Lids available



DESICCATORS

- Class A Borosilicate 3:3 glass
- Plastic knobbed or vacuum stopcock
- Complete with porcelain plate



WEIGHING SCOOPS

- Available sizes: 3ml, 6ml, 10ml



OINTMENT JARS

- With or without cap



MORTARS AND PESTLES

- Porcelain or Class A Borosilicate 3:3 glass
- Porcelain – completely glazed, or glazed on outside only



CYLINDERS Class A Borosilicate 3:3 glass

MEASURING

- Spouted or stoppered
- Graduated
- Hexagonal or round base
- Batch or Individual Certification available

NESSLER

- Graduated
- Batch or Individual Certification

BURETTES

DR. SCHILLING

- Calibrated "Ex" (to deliver)
- Automatic zero adjustment
- Complete with plastic bottle and stable plastic base

STRAIGHT BORE

- Class A Borosilicate 3:3 glass
- Calibrated "Ex" (to deliver)
- Graduated
- Batch or Individual Certification available
- Glass, teflon (PTFE) or rotaflo stopcock option



FUNNELS Class A Borosilicate 3:3 glass

FILTER

- With long or short stem

BUCHNER

- Porcelain options available
- Glass - with sintered disc
- Various porosities available

SEPARATING

- Glass, teflon (PTFE) or rotaflo stopcock options
- Pear or conical shapes available
- With polypropylene stopper

FLASKS Class A Borosilicate 3:3 glass**BOILING**

- Round or flat bottom
- Narrow or wide neck

DISTILLATION

- With side arm inclined at 75° to vertical axis

ERLENMEYER

- Wide or narrow neck
- Plain, ground neck or screw cap

FILTER

- Plain or ground neck
- With side arm

IODINE

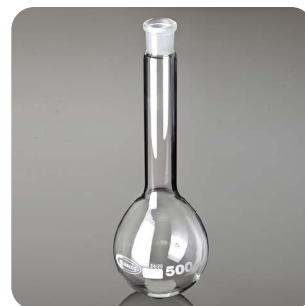
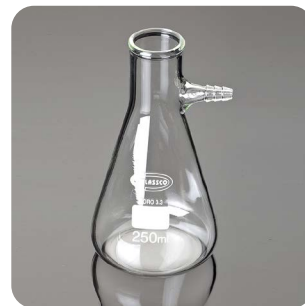
- With ground neck and stopper

KJELDAHL

- With plain or ground neck

VOLUMETRIC

- Amber or clear
- With plastic or glass stopper
- Batch or Individual Certification available

**PIPETTES****PASTEUR**

- Soda Lime glass
- With or without cotton plug
- Various sizes available: 150mm or 230mm

SEROLOGICAL

- Graduated
- Batch or Individual Certification
- Calibrated "Ex" (to deliver)

VOLUMETRIC

- Batch or Individual Certification
- Calibrated "Ex" (to deliver)

**TUBES****MELTING POINT**

- Determination of melting point
- May be used for sample storage

CAPILLARY

- Heparinised options available
- Sigillum wax available

TEST

- Soda-lime or Class A Borosilicate 3:3 glass
- Round bottom
- With or without rim
- Graduated or ungraduated



The product images shown are for illustration purposes only and may not be an exact representation of the product.

E&OE



LABORATORY PLASTICS



MEASURING CYLINDERS

- Spouted
- Graduated
- Hexagonal base
- Polypropylene or TPX® (Polymethylpentene)



MEASURING JUGS

- Graduated
- Clear or white options available
- Polypropylene or TPX® (Polymethylpentene)



FUNNELS

- Filter or powder funnels available
- Long or short stem
- Polyethylene or polypropylene

The product images shown are for illustration purposes only and may not be an exact representation of the product.

E&OE

BOTTLES

SAMPLE

- Wide or narrow neck
- Round or square
- With or without cap
- Polyethylene or polypropylene

STORAGE

- With or without stopcock
- Ideal for bulk storage or transport of liquids
- Polyethylene

WASH

- Non-Labelled and Labelled bottles available
- Labelled for easy identification of contents e.g. Acetone, Methanol, Distilled water, Isopropanol
- Polyethylene



PIPETTES

PASTEUR

- Graduated or non-graduated
- Sterile or non-sterile
- Bulk or individually wrapped

SEROLOGICAL

- Graduated
- Sterile
- Bulk or individually wrapped



PIPETTE TIPS

- Filter, non-filter or specialised
 - Aerosol barrier tips
 - Bulk or racked
 - Sterile¹ or non-sterile
- ¹Fully traceable - Quality certificates and Certificates of Sterilisation available

BEAKERS

- Spouted
- Graduated
- Autoclavable
- Polypropylene or TPX® (Polymethylpentene)

CUVETTES

- Macro or micro volumes
- Characterised by minimal light scatter with high transmission
- Glass quartz or crystal-clear polystyrene

TUBES

CENTRIFUGE

- Graduated
- Sterile
- Bulk, racked or individually wrapped
- Free-standing tubes available

CRYO

- Suitable for storage at -20°C, -80°C and in the vapour phase of LN2
- Ultra-pure medical grade, USP class VI certified polypropylene w/o leachables
- Certified free of RNase, DNase & DNA and PCR inhibitors
- Barcoding service available

MICROCENTRIFUGE

- Graduated
- Safe temperature range of -90 to 121°C
- Certified free of RNase, DNase & DNA and PCR inhibitors
- Coloured options available

SCREWCAP MICRO

- Temperature range of -196 to 121°C
- Skirted or conical bases
- Numerous cap and tube combinations available for specific applications
- Medical grade polypropylene

TEST

- Graduated or non-graduated
- Round or conical based
- Stoppered, screw caps or snap cap options available
- Polystyrene or polypropylene



PETRI DISHES

- Vented or standard
- Half plate available
- Tissue culture options available



SYRINGES

- Smooth flow
- Sterile in peel pack
- Latex free
- Medical grade polypropylene



MICROPLATES

- 24, 96, 384 wells
- Black, white or Ultraclear
- UV star or glass bottom plates
- Polypropylene or polystyrene



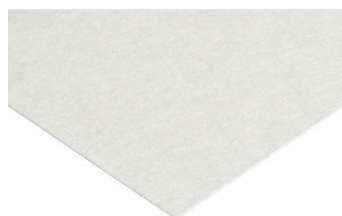
FILTRATION SYSTEM – GLASS

- 3 piece, all glass system
- 47mm diameter
- 300ml filter holder volume
- 1000ml filter flask volume



LENS CLEANING TISSUE

- Non-fibrous, lint-free
- Made from 100% manila fibres



BENCH PROTECTION

- Two layer surface protection
- Highly absorbent cellulose
- Impermeable polyethylene



GLASS FIBRES

- For suspended solids test and clarification
- With or without binder
- Various pore sizes available including 1.6µm
- Various diameters available



WEIGHING PAPER

- Smooth
- Semi-transparent



FILTER PAPER

- Quantitative or qualitative
- Various grades and pore sizes available
- Various diameters available
- Hardened versions available



SYRINGE FILTERS

- Cellulose acetate, nylon, PTFE or PVDF
- Sterile or non-sterile
- Pore sizes of 0.45µm or 0.2µm available
- ID 25mm OD 33mm
- Individually wrapped or bulk packaged



ANTIBIOTIC TESTING PAPER

- Thick and absorbent
- Available in 6mm, 9mm or 13mm diameters



MEMBRANE FILTERS

- Cellulose nitrate and cellulose acetate available
- PTFE available for corrosive substances
- Nylon available for HPLC
- Sterile or non-sterile



LABORATORY **HARDWARE**



SWABS

DRY

- Cotton or rayon tip
- Plastic or wooden shaft
- Round bottom tube for easy transport of samples
- Certificate of Analysis available on request

ENVIRONMENTAL

- Used to assess microbial presence on surfaces and equipment
- Ideal for sampling uneven or irregular surfaces and difficult to reach sites
- Kits include a rayon or flocked swab + transport media
- Choice of buffered peptone water or neutralising solution
- Kits require no preparation
- Certificate of Analysis available on request



WEIGHING BOATS

- Available sizes: 7ml, 30ml and 100ml
- Square or diamond shaped

The product images shown are for illustration purposes only and may not be an exact representation of the product.

E&OE



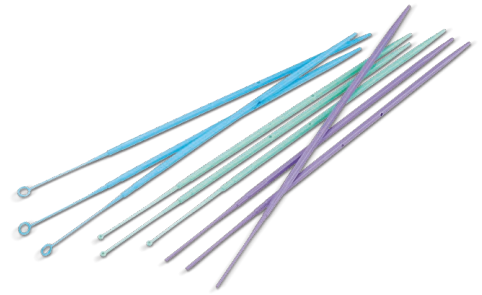
PAPER WIPES & STAND

- 1 or 2 ply
- White
- Various sizes available
- Roll form
- Stand made of metal



PARAFILM

- 50mm, 100mm and 500mm widths available
- Various lengths available
- Parafilm dispensers available



INOCULATING LOOPS, NEEDLES & SPREADERS

- Sterile
- 1µl or 10µl
- Plastic
- Flexible



STANDARD FORCEPS

- Available with sharp or blunt ends
- Various lengths available



TEST SIEVES

- 200mm diameter



SPATULAS

- Wooden or stainless steel
- Aylesbury Type
- Chattaway
- Micro
- Spoon Type



GLOVES

- Latex and nitrile available
- High quality and durable
- Various sizes available



LAB COATS

- Reusable or disposable
- Various sizes available



SAFETY GLASSES

- A range of safety glasses is available



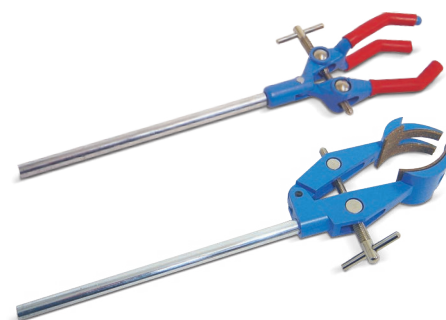
DIGITAL TIMERS

- Up/down
- Jumbo
- 3 or 4 channel



BRUSHES

- Bottle - Nylon or fibre
- Burette - Nylon or bristle
- Flask - Bristle



CLAMPS

- Burette - Double or single
- Retort - 2, 3 or 4 prong
- Retort Rings with Bossheads
- Various sizes available



AUTOCLAVE BAGS

- Made from LDPE granules extruded to 65µm film thickness
- Standard, double and heavy duty
- Autoclave Tape available in 12mm and 24mm



EYEWASH STATIONS

- Eye wash bottle made of polyethylene
- Head has an airvent valve to ensure air refill of free space in bottle preventing draw back of contaminated wash into bottle
- A perforated spray plate in the cup centre breaks up the stream to give the eye a gentle wash



MAGNETIC STIRRER BARS

- Guaranteed inert and leak-free
- Isostatically molded in pure, FDA approved, PTFE
- Individually polished to stay cleaner for longer
- Retriever also available



LASEC® SERVICING

Boasting a large team of qualified engineers, located throughout South Africa and travelling weekly into the rest of Africa, Lasec® ensures a full-service package, including preventative maintenance, repairs and service level agreements. Worry-free use of all laboratory and scientific equipment in your facility is a possibility using the Lasec® expertise.



VALUE ADDED SOLUTIONS INCLUDE:

- ISO17025 SANAS Accredited calibrations for volume and mass metrology
- Assistance with Good Lab Practice (GLP) and standard operating procedures in line with ISO recommendations
- Biosafety consulting service facilitated by NSF accredited engineers
- Tailor-made service contracts and preventative maintenance plans
- End-user training on correct usage and maintenance of equipment
- Facilitation of informative and practical CPD accredited training courses
- Assistance with IQ, OQ and PQ protocol completion

A

Adapters
Alcoholmeters
Applicators
• Haemolysis, Silver Nitrate, Wooden
Assay Discs
Autoclaves
Automated Liquid Handlers

B

Bags
• Stomacher, Autoclave
Balances and Scales
Baskets
• Autoclave, Glassware Washer, Ultrasonic
Baths
• Circulating, Oil, Ultrasonic, Water
Beakers
Bench Protection
Biological Oxygen Demand Systems
Biological Safety Cabinets
Blood Collection Systems
Bottles
• Aspirator, Dropping, Gas Washing, McCartney, Media, Reagent, Specific Gravity, Weighing
Bottletop Dispensers
Boxes
• Cryo, Slide
Brushes
• Bottle, Burette, Cervical, Flask, Test Tube
Buckets
Burettes
Burners
• Bunsen, Safety, Meker, Spirit, Teclu

C

Caps and Closures
• Labocap, Metal, Urea
Cell Scrapers
Centrifuges
Chlorophyll Content Meters
Clamps
• Burette, Reaction, Retort, Vacuum Hose
Climatic Chambers
CO₂ Incubators
CO₂ Monitors (Environmental)

Colony Counters
Colorimeters
Condensers
• Air, Allihn, Coil, Cold Finger, Jacketed, Liebig
Conductivity Meters
Cones
• Drip End, Long Tip, Plain End
Connectors
• T-shape, Y-shape
Containers
• Ointment, Sample, Sharps, Specimen, Urine, Waste
Counters
• Colony, Blood Cell, Tally
Counting Chambers
Coverslips
Crucibles
Cryogenics
• Shipping Containers, Storage Containers
Cuvettes
Cylinders
• Measuring, Mixing, Nessler

D

Data Acquisition Systems
• Education, Research, Pharma
Dean and Stark Receivers
Density Meters
Desiccators
Dishes
• Crystallising, Petri, Staining
Dissolved Oxygen Meters
Droppers

E

Electrodes
Electrophoresis Equipment
ELISA Equipment
• Microplate Readers, Microplate Washers
Embedding Cassettes
Entomological Pins
Evaporating Basins
Evidence Drying Cabinets
Extraction Thimbles
Extractors
• Fume, Soxhlet

F

Films
• Parafilm, Sealing
Filter
• Holders, Paper, Systems
Flasks
• Boiling, Distillation, Erlenmeyer, Filter, Iodine, Kjeldahl, Tissue-culture, Volumetric
Fluorometers
Forceps
Freeze Dryers
Freezers
Fridges
Fume Hoods
Funnels
Furnaces

G

Gauzes
Gel Documentation Systems
Gelation Timers
Glass Beads
Glass Fibres
Glassware
Glassware Washers and Dryers
Glove Boxes
• Aseptic Isolators
Gloves
• Latex, Nitrile

H

Haemoglobinometers
Heating Mantles
Homogenisers
Hotplates
Hydrometers

I

Ice Flakers
Incubators

J

Jars
• Anaerobic, Coplin, Honey, Museum, Specimen, Ointment, Pipette, Preserving, Staining
Jugs

K

Kits

- Blood Collection, Diagnostic Test, Dissection

L

Laboratory Animal Housing

Laboratory Jacks

Laboratory Markers

Laboratory Mills

Laboratory Trolleys

Laminar Flow Benches

Lancets

Leaf Area Meters

Lens Cleaning Tissue

Liquid Chromatography

- Fraction Collectors, GPC Clean-up Systems, HPLC

Loops

- Inoculating, Needle, Wire

M

Magnetic Stirrers

Mats

- Deep Well Plate, ELISA, Microplate, PCR Sealing, PCR Volume Reducing, Storage Sealing

Measures

- Balers, Calipers, Conical, Tilt

Melting Point Apparatus

Membrane Filters

Microscope Slides

Microscopes

Mixers

Moisture Balances

Mortar and Pestles

N

Needles

- Dissecting, Hypodermic, Syringe

O

Ovens

- Hybridisation, Universal, Vacuum

P

PCR

- Consumables, Equipment, Reagents

Pencils

- Diamond, Grease

Petri Dish Fillers

pH Indicator Paper

pH Meters

Photosynthesis Systems

Pipette Fillers

Pipettes

- Pasteur, Serological, Volumetric, Air Displacement, Positive Displacement

Plates

- Deep Well, Elisa, Microplate, Microtitre, Multiwell, PCR

Polarimeters and Saccharimeters

Protective Clothing

- Aprons, Dust Coats, Face Shields, Goggles, Lab Coats, Dust Masks, Respiratory Masks, Surgical Masks, Mop Caps, Over Shoes, Safety Spectacles, Scrub Wear Suits, Surgical Visors

Pumps

- Peristaltic, Vacuum, Water Jet

R

Racks

- Test Tube, Staining

Refractometers

Reservoirs

Rheometers

Rotary Evaporators

Rotational Vacuum Concentrators

S

Safety Storage Cabinets

Sample Concentrators

Sample Cups

Scalpel

- Blades
- Handles

Scissors

Scoops

Shakers

Slide

- Drying Benches, Folders

Sockets

Soil CO₂ Exchange Systems

Soil Respiration Systems

Solid Phase Extraction (SPE)

Spatulas

- Aylesbury, Chattaway, Micro, Spoon-type

Spectrophotometers

Spreaders

Stands

- Paper Wipe, Retort, Tripod

Stirring Rods

Stopcocks / Keys

Stoppers

Swabs

Syringe Filter Holders

T

Tape

- Autoclave, Time

Teats

- Pasteur Pipette, Rubber

Test Tube Holders

Thermal Cyclers

Thermometers

Timers

Tips

- Filter, Non-filter, Robotic

Tissue Grinders

Titration

Tongs

Transilluminators

Trays

Tubes

- Blood Gas, Capillary, Centrifuge, Culture, Durham, Leucosep, Microcentrifuge, PCR, Reaction, Test, Tissue Culture

Tubing

Turbidity Meters

U

Ultrasonic

- Baths, Homogenisers

V

Vials

- Cryovial, Pill, Sample, Scintillation, Serum, Vaccine

Viscometers

W

Watch Glasses

Water Baths

Water Purification Systems

Weighing

- Boats, Paper

Wipes



CAPE TOWN

52 Old Mill Road
Ndabeni
Cape Town
7405

+27 21 531 7504
+27 21 531 7562

JOHANNESBURG

48 Gazelle Crescent
Gazelle Place
Corporate Park South
Randjiespark
Midrand
1685

+27 11 052 2500
+27 11 052 2699

DURBAN

Unit 3, Windsor
Court, Ground Floor
AFS House, 4 Derby
Place, Derby Downs
Westville
3629

+27 31 702 6001
+27 31 702 3008

PORT ELIZABETH

Unit 5.1, Building 3
Ascot Office Park
Block 7
Conyngham Street
Greenacres
6001

+27 41 373 9173
+27 41 374 8805

BLOEMFONTEIN

53 President Steyn
Avenue
Westdene
Bloemfontein
9301

+27 51 447 9500
+27 51 447 1940

✉ sales@lasec.com www.lasec.com

PLEASE DIRECT ALL ENQUIRIES FROM OUTSIDE SOUTH AFRICA TO:

📍 52 Old Mill Road, Ndabeni, 7405, Cape Town PO Box 2110, Cape Town, 8000

+27 21 531 7504 international@lasec.com
+27 21 531 7562 www.lasec.com