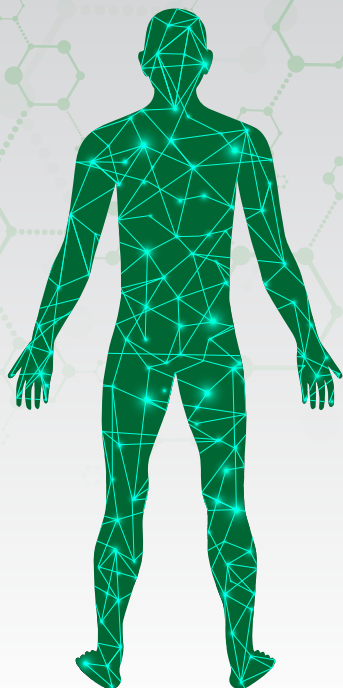


# Bio-Plex® Multiplex Immunoassay System

BIO-RAD



Unlock the potential of **multiplex immunoassays**. Perform **simultaneous detection** and **quantification** of **multiple analytes** in a **single well** or **reaction**.



[Click here for more information](#)



## A Wide Range Of Applications Include:

### Biomarker Discovery and Validation



- Identify and validate biomarkers for cancer, cardiovascular and infectious diseases and more
- Assess the efficacy and toxicity of drug candidates

### Immunology and Inflammation Research



- Analyse cytokine and chemokine profiles
- Study the mechanisms of inflammation and effects of therapeutic interventions

### Cell Signalling Pathway Analysis



- Investigate signal transduction pathways
- Understand cellular responses to various stimuli and treatments

### Clinical Research and Diagnostics



- Develop diagnostic assays for various diseases
- Monitor disease progression and treatment efficacy in clinical studies

### Vaccine Development and Evaluation



- Assess immune responses to vaccines
- Compare the immunogenicity of different vaccine candidates

### Autoimmune and Infectious Disease Studies



- Analyse antibodies in autoimmune and infectious diseases
- Study host-pathogen interactions and immune responses to infections

### Nutritional and Metabolic Research



- Investigate the effects of nutrients and metabolic conditions on various biomarkers
- Study the mechanisms underlying metabolic disorders such as diabetes and obesity

### Pharmacokinetics and Toxicology



- Monitor drug levels and their effects on multiple biomarkers in pharmacokinetic studies
- Assess the toxicological effects of compounds

Contact your **Lasec® Sales Representative** today.  
Ts & Cs apply

+27 21 531 7504    [sales@lasec.com](mailto:sales@lasec.com)    [www.lasec.com](http://www.lasec.com)

 **Lasec®**

E&OE

# Bio-Plex® Assays, Kits and Reagents

Bio-Rad has strategically customised Luminex magnetic beads to deliver high quality and reliable quantification of over 450 biologically relevant targets across Human, Mouse, Rat and other Multi-Species.



## Bio-Plex® Multiplex Panels available:

### Human

Acute Phase Proteins, Apolipoproteins, Apoptosis Pathway, Chemokines, Cytokines and Growth Factors  
Diabetes Markers, Hormone Markers, Inflammation Markers, Immunotherapy Panel, Isotyping, Kidney Toxicity Markers, SARS-CoV-2 Serology, Th17 Cytokines

### Mouse

Chemokines, Cytokines and Growth Factors, Diabetes Markers, Th17 Cytokines

### Rat

Cytokines and Growth Factors, Diabetes Markers, Kidney Toxicity Markers

### Multi-Species

TGF-Beta Assays, Cell Signaling Assays

### Bio-Plex® Calibration Kit



## Calibration and Validation Kits:

To ensure optimal and consistent results with your Bio-Plex® 200 instrument, the Bio-Plex® Calibration and Validation Kits are available for your routine instrument maintenance, calibration and validation procedures.

### Key Features include:

- Automated validation with both high and low PMT settings
- Broadened classification regions 1 to 100
- Bio-Plex® flashlight for visual and adjustment of sample-needle height
- Two needle-height adjustment options to accommodate various plate types
- Bio-Plex® reservoir to enable unattended operation of maintenance functions

### Bio-Plex® Validation Kit 4.0



Contact your Lasec® Sales Representative today.  
Ts & Cs apply

+27 21 531 7504    sales@lasec.com    www.lasec.com

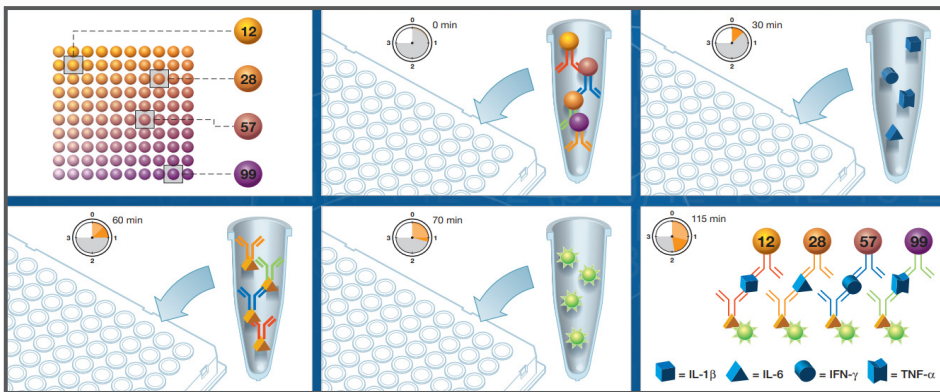
# Personalising your own multiplexing assays with Luminex Beads

**Luminex®**

The xMAP® Technology Beads allows for testing multiple targets from a single sample. Luminex Microsphere beads are compatible with all xMAP® instruments, and instruments that use xMAP® technology such as the Bio-Plex® 200, plexing up to 500 targets.

Concentration of the MagPlex® beads are supplied as a 12.5 million / ml in 1 ml or 4 ml size vials.

The MagPlex® Beads provide quality and reliable flexible platforms to perform multiple assays in a single well through its uniquely colouring scheme allowing you to make your own personal multiplexing immunoassays.



500 MagPlex® Regions Available

1	11	21	31	41	51	61	71	81	91
2	12	22	32	42	52	62	72	82	92
3	13	23	33	43	53	63	73	83	93
4	14	24	34	44	54	64	74	84	94
5	15	25	35	45	55	65	75	85	95
6	16	26	36	46	56	66	76	86	96
7	17	27	37	47	57	67	77	87	97
8	18	28	38	48	58	68	78	88	98
9	19	29	39	49	59	69	79	89	99
10	20	30	40	50	60	70	80	90	100

101-500

Compatible with:  
 All xMAP® Instruments  
 Luminex® 200™, FLEXMAP 3D®, and  
 xMAP INTELLIFLEX®  
 FLEXMAP 3D® and xMAP INTELLIFLEX®

## Lasec® offers all the reagents needed to customise your own multiplex immunoassay

- Luminex MagPlex® Beads
- Coupling Kits
- Bio-Rad Antibodies
- Bio-Plex® Streptavidin-PE

The Bio-Plex® amine coupling kit is designed for immobilising antibodies or other proteins to carboxylated beads.

### Key Features:

- For use with antibodies or other proteins
- For use in the Bio-Plex® Human SARS-CoV-2 Neutralisation Antibody Custom Assay Developer Kit
- Each coupling reaction supports the analysis of 200 samples
- Sufficient reagents for 30 coupling reactions using 100 µl of Bio-Plex® COOH beads
- Tested on proteins from 6 to 150 kD

Bio-Plex® Streptavidin-PE is a component of the Bio-Plex® reagent kit, available separately to enable flexibility during development and optimisation.



Contact your Lasec® Sales Representative today.  
 Ts & Cs apply

+27 21 531 7504    sales@lasec.com    www.lasec.com



E&OE