

**BIO-RAD**

# Explore a wide range of **Antibodies** from **Bio-Rad**

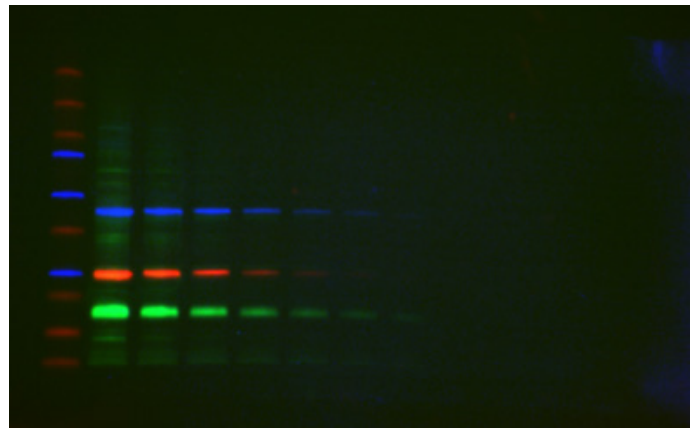
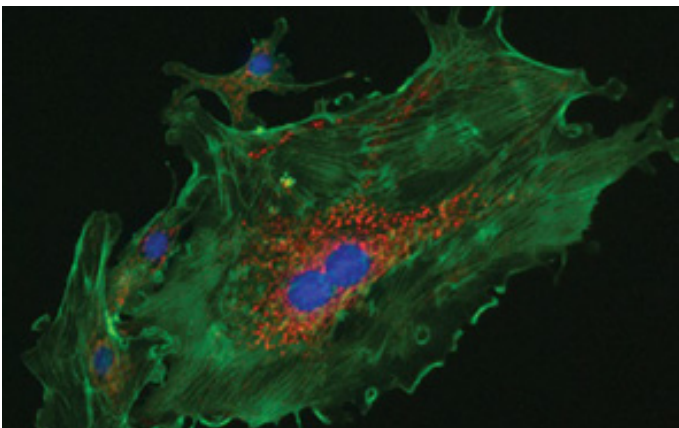
Bio-Rad offers over 8,000 high-quality antibodies and reagents, designed to help you achieve reliable, reproducible results across your research applications.

With Bio-Rad's online Antibody Selector, you can easily search for primary, secondary, and cross-reactive antibodies tailored to your specific needs.

Choose from 28 different application areas, select your preferred antibody format, monoclonal or polyclonal clone type, and view supporting citations to ensure suitability for your research.

## Some of the main antibody applications include:

- Western Blotting
- ELISA
- Flow Cytometry
- Immunohistology
- Immunofluorescence
- Immunoprecipitation



Find out more information from the Bio-Rad antibody selector or contact Lasec® for more information

Click here



# StarBright™ Dyes

## Flow Cytometry Antibodies

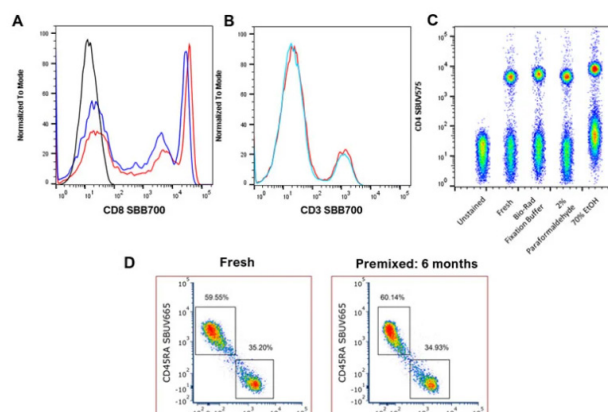


StarBright™ Dyes have been meticulously engineered for exceptional stability and brightness. With narrow excitation and emission profiles, they integrate seamlessly into both new and existing flow cytometry panels, enhancing resolution, reducing spillover, and limiting spreading error. This allows for the effortless construction of larger, more precise panels.

Conjugated to highly cited immunology antibodies, StarBright™ Dyes are an ideal addition to Bio-Rad's extensive range of fluorescent dyes. They are optimised for ultraviolet, violet, blue, red, and yellow lasers, and are fully compatible with all cell sorters, cell analysers, and spectral flow instruments.

## Why choose StarBright™ Dyes?

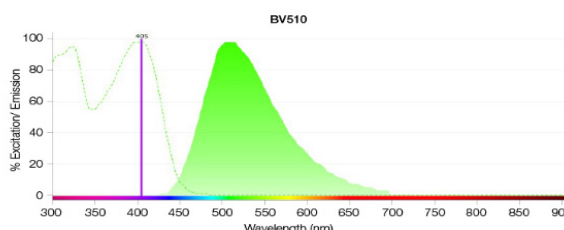
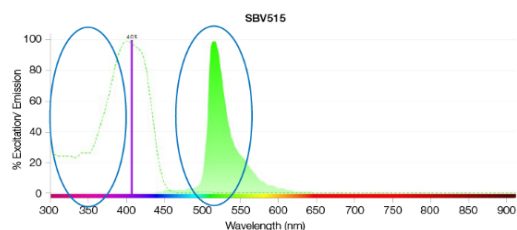
- Exceptional brightness
- Narrow excitation and emission
- Flexible to work in all buffers
- Compatible with all instruments and reagents
- Consistent staining
- On common immunophenotyping targets



## Need a customer Panel? Try Bio-Rad's Multicolour Panel Builder

Design your personalised multicolour panel in just a few simple steps with Bio-Rad's interactive Panel Builder. Select target species, antibody clone, format, isotype, and fluorophore, all in one streamlined tool.

Build larger panels with confidence using advanced features like antigen density selection and brightness-based fluorophore recommendations. The tool also automatically excludes incompatible [fluorophores](#), helping you design efficient, high-performance panels with ease.



## Interactive Spectraviewer for Flow Cytometry, Western Blotting and Microscopy

With hundreds of fluorophores to choose from, the interactive Spectraviewer will help you choose the [correct](#) fluorophore for your application

- Fully customise fluorophores, lasers, and filter combinations
- View excitation and emission profiles of available fluorophores
- Supports flow cytometry, western blotting, and fluorescence microscopy

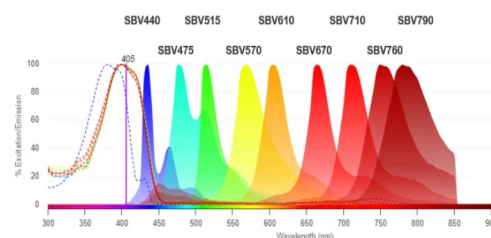


Fig. 1. Excitation and emission spectra of StarBright Violet Dyes

Set up panels and experiments with confidence using the multi-laser format for fluorophore compatibility, cross-laser excitation and compensation requirements. Explore over 4,000 antibodies from Bio-Rad to build accurate and efficient experimental designs.

## StarBright™ Dye Webinars



Access free on-demand webinars via Bio-Rad's website to deepen your understanding of flow cytometry and StarBright™ Dye antibodies.

These expert-led sessions provide in-depth insights into:

- StarBright™ Dye technology
- Panel building strategies
- Laser selection and optimisation

Register for immediate access and start exploring best practices in fluorescence panel design.

**Want to find out more about StarBright Antibodies?**  
**Click the link to access StarBright Antibody Resources**

[Click here](#)

Contact your [Lasec® Sales Representative](#) for more information

+27 21 531 7504 [sales@lasec.com](mailto:sales@lasec.com) [www.lasec.com](http://www.lasec.com)



E&OE