

LASEC® MICROSCOPE RANGE



MICROSCOPES AND ACCESSORIES

**COMPOUND, STEREO AND SPECIALITY
MICROSCOPES TO SUIT YOUR APPLICATION**

 **Lasec**®

CONTENTS

Lasec® Microscope Servicing	03
Application Guide	04
Compound Microscopes	
Basic Student / Undergraduate Microscopes	
Semi-Advanced Biological Microscopes	
Semi-Advanced Medical Microscopes	
Advanced Research Biological Microscopes	
Semi-Advanced Microscope Package + Phase Contrast Kit	05
Speciality Microscopes	
Fluorescence Compound Microscopes	
Inverted Biological Microscopes	
Inverted Fluorescence Microscopes	
Multi-Head Biological Microscopes	07
Stereo Microscopes	09
Microscope Cameras	11
Additional Microscopes	13
Microscope Accessories	14
Microscope Consumables	14



LASEC® MICROSCOPE SERVICING

Get the absolute best out of your investment. Boasting a large team of skilled engineers throughout Africa, our technical expertise is literally on your doorstep.

A Lasec® annual service plan ensures optimal performance year after year and includes the following:











- Fault checking and dry-cleaning of circuitry
- Cleaning and re-installing of eyepieces
- Checking, cleaning and re-installing objectives
- Check turret rotation and alignment, adjusting as required
- Checking condenser; cleaning lenses and filters
- Checking condenser alignment controls, adjusting as required
- Checking iris diaphragm
- Ensuring that all fitments are secure onto the main chassis
- Compiling a Service Report, noting any necessary recommendations.

VALUE-ADDED SOLUTIONS INCLUDE:

- ISO17025 (SANAS) Accredited calibrations for volume and mass metrology
- Free Good Lab Practice (GLP) audits and comprehensive reports
- Biosafety consulting service facilitated by NSF accredited engineers
- Tailor-made service contracts for your entire lab
- End-user training on correct usage and maintenance of equipment
- Facilitation of CPD-accredited training courses
- Assistance with IQ, OQ and PQ protocol

EXTEND THE LIFESPAN OF YOUR MICROSCOPE WITH OUR PREVENTATIVE MAINTENANCE PLANS TODAY.

APPLICATION GUIDE

MICROSCOPE MODELS	AREAS OF APPLICATION									
										
	Academic / Tertiary	Agriculture	Food and Beverage	Industrial / Production	Medical	Mining	Pharmaceutical	Research	Veterinary	Water & Sanitation
COMPOUND MICROSCOPES										
Basic Compound Microscopes BS-2022 / BS-2022T	<input type="radio"/>		<input type="radio"/>						<input type="radio"/>	<input type="radio"/>
Semi-Advanced Biological Compound Microscopes BS-2036C / BS-2036CT	<input type="radio"/>	<input type="radio"/>	<input type="radio"/>		<input type="radio"/>		<input type="radio"/>	<input type="radio"/>	<input type="radio"/>	<input type="radio"/>
Semi-Advanced Medical Compound Microscopes BS-2052B / BS-2052BT	<input type="radio"/>		<input type="radio"/>		<input checked="" type="radio"/>			<input type="radio"/>	<input checked="" type="radio"/>	<input type="radio"/>
Advanced Research Compound Microscopes BS-2080 / BS-2080T	<input type="radio"/>	<input type="radio"/>	<input checked="" type="radio"/>	<input type="radio"/>	<input checked="" type="radio"/>		<input checked="" type="radio"/>	<input checked="" type="radio"/>	<input type="radio"/>	<input checked="" type="radio"/>
SPECIALITY MICROSCOPES										
Fluorescence Compound Microscope BS-2080F	<input type="radio"/>				<input checked="" type="radio"/>		<input type="radio"/>	<input checked="" type="radio"/>		
Inverted Biological Microscope BS-2091	<input type="radio"/>	<input type="radio"/>			<input checked="" type="radio"/>			<input checked="" type="radio"/>	<input type="radio"/>	
Inverted Fluorescence Microscope BS-7020	<input type="radio"/>	<input type="radio"/>			<input checked="" type="radio"/>			<input checked="" type="radio"/>	<input type="radio"/>	
Multi-Head Advanced Teaching Microscopes BS-2080MH4 / MH6 / MH10	<input checked="" type="radio"/>				<input type="radio"/>			<input type="radio"/>		
STEREO MICROSCOPES										
Basic Stereo Zoom Microscopes BS-3020 / BS-3020T	<input type="radio"/>	<input type="radio"/>	<input type="radio"/>	<input checked="" type="radio"/>		<input type="radio"/>			<input type="radio"/>	<input type="radio"/>
Semi-Advanced Stereo Zoom Microscopes BS-3040 / BS-3040T	<input type="radio"/>	<input checked="" type="radio"/>	<input checked="" type="radio"/>	<input checked="" type="radio"/>		<input checked="" type="radio"/>	<input checked="" type="radio"/>	<input type="radio"/>	<input type="radio"/>	<input type="radio"/>
Advanced Stereo Zoom Microscopes BS-3060B / BS-3060BT	<input type="radio"/>	<input checked="" type="radio"/>	<input checked="" type="radio"/>	<input checked="" type="radio"/>		<input checked="" type="radio"/>	<input checked="" type="radio"/>	<input checked="" type="radio"/>	<input type="radio"/>	<input type="radio"/>
Advanced Stereo Zoom Microscopes with Fine Focus BS-3060C / BS-3060CT	<input type="radio"/>	<input checked="" type="radio"/>	<input checked="" type="radio"/>	<input checked="" type="radio"/>	<input checked="" type="radio"/>	<input checked="" type="radio"/>	<input checked="" type="radio"/>	<input checked="" type="radio"/>	<input type="radio"/>	<input type="radio"/>

Highly Recommended Suitable

The product images shown are for illustration purposes only and may not be an exact representation of the product.

E&OE

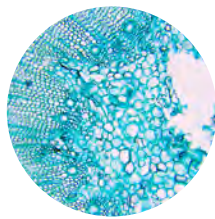
COMPOUND MICROSCOPES

These are used to view extremely small specimens, using high magnification. Light is **transmitted** through the sample.

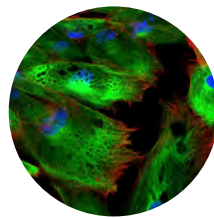
Typically, a compound microscope is used for viewing samples at high magnification (**40 - 1000x**), which is achieved by the **combined** effect of two sets of **lenses**, the ocular lens (in the **eyepiece**) and the **objective lenses** (close to the sample).

CONSUMABLES:

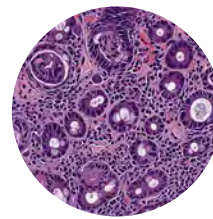
- Slides
- Coverslips
- Immersion Oil
- Fixative Spray
- Lens Cleaning Tissue



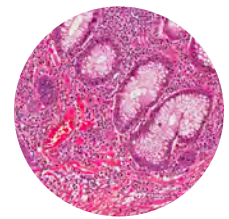
PLANT CELLS



SKIN CELLS



VIRAL INFECTION



SMALL INTESTINE

COMPOUND MICROSCOPES	AREAS OF APPLICATION									
Basic Compound Microscopes BS-2022 / BS-2022T	<input type="radio"/>		<input type="radio"/>						<input type="radio"/>	<input type="radio"/>
Semi-Advanced Biological Compound Microscopes BS-2036C / BS-2036CT	<input type="radio"/>	<input type="radio"/>	<input type="radio"/>		<input type="radio"/>		<input type="radio"/>	<input type="radio"/>	<input type="radio"/>	<input type="radio"/>
Semi-Advanced Medical Compound Microscopes BS-2052B / BS-2052BT	<input type="radio"/>		<input type="radio"/>		<input checked="" type="radio"/>			<input type="radio"/>	<input checked="" type="radio"/>	<input type="radio"/>
Advanced Research Compound Microscopes BS-2080 / BS-2080T	<input type="radio"/>	<input type="radio"/>	<input checked="" type="radio"/>	<input type="radio"/>	<input checked="" type="radio"/>		<input checked="" type="radio"/>	<input checked="" type="radio"/>	<input type="radio"/>	<input checked="" type="radio"/>

Highly Recommended Suitable



BASIC STUDENT / UNDERGRADUATE MICROSCOPES

BS-2022 BIOLOGICAL COMPOUND MICROSCOPE

Cost-effective, practical and easy to operate, these microscopes adopt LED illumination, saving energy and extending the working life of the microscope. Widely used in educational, academic, and agricultural fields.

- Including 2022, 2022T, with different viewing heads
- Achromatic objective 4x, 10x, 40x, 100x (oil) backward quadruple nosepiece
- Abbe NA 1.25 with iris diaphragm and filter
- Illumination: 3W LED illumination, brightness adjustable

The product images shown are for illustration purposes only and may not be an exact representation of the product.

E&OE

SEMI-ADVANCED BIOLOGICAL MICROSCOPE**BS-2036 BIOLOGICAL COMPOUND MICROSCOPE**

High-level microscopes, specially suited for undergraduate education, medical and laboratory study. Microscopes in this series are characterised by an infinite optical system, combined with an infinite plan achromatic set of objectives.

- Seidentopf binocular (BS-2036C) or trinocular (BS-2036CT) viewing head, inclined at 30°, 360° rotatable, interpupillary 50 - 75 mm
- Eyepiece WF10× achromatic (infinite plan) objective 4×, 10×, 40×, 100× (oil)
- Abbe condenser NA1.25 with iris diaphragm
- Coaxial coarse and fine focusing knobs, travel range: 26 mm, scale: 2 μm
- Cable winding device

**SEMI-ADVANCED MEDICAL MICROSCOPES****BS-2052 BIOLOGICAL COMPOUND MICROSCOPE**

Classical biological microscopes with high-definition optical systems, provide sharp imagery. The units are fitted with Koehler LED illumination, cable winding device and 50× (oil) objective as standard, making them ideal for medical laboratory applications.

- Seidentopf binocular (BS-2052B) or trinocular (BS-2052BT) viewing head, inclined at 30°, 360° rotatable, interpupillary 47 - 78 mm
- Eyepiece WF10× achromatic or infinite plan objective 4×, 10×, 40×, 50×, 100× (oil)
- Abbe condenser NA1.25 with iris diaphragm
- Coaxial coarse and fine focusing knobs, travel range: 26 mm, Scale: 2 μm
- Cable winding device
- Eyepiece pointer and 0.01 mm stage micrometre

**ADVANCED RESEARCH BIOLOGICAL MICROSCOPES****BS-2080 BIOLOGICAL COMPOUND MICROSCOPE**

A high-level microscope specially designed for advanced laboratory research. The combination of the infinite optical system and Koehler LED illumination provides excellent optical quality for research applications.

- Seidentopf binocular (BS-2080B) or trinocular (BS-2080T) head inclined at 30°, interpupillary 48 - 75 mm
- Extra wide field eyepiece EW10× / Ø 22
- Infinite plan achromatic objective 4×, 10×, 40×, 100× (oil)
- Aspherical collector with Kohler illumination
- Swing-out condenser NA 0.9 / 0.25





PHASE CONTRAST MICROSCOPES MICROSCOPE PACKAGE + PHASE CONTRAST KIT

Available for both the BS-2052 and BS-2080 series microscopes as enhancement packages. The package includes the addition of a phase contrast kit that comprises of a turret condenser as well as a set of phase objectives and filters. These microscope packages are ideally suited for phase contrast applications in medical establishments, laboratories, research institutes, academic laboratories, colleges and universities.

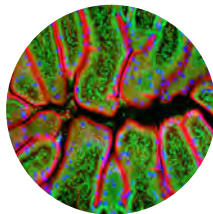
- BS-2052B, BS-2052BT (packages) + BPHB-4 turret phase contrast kit
- BS-2080B, BS-2080T (packages) + BPHE-1 turret phase contrast kit
- Infinite plan achromatic phase objectives 4x, 20x, 40x, 100x

SPECIALITY MICROSCOPES

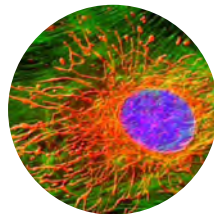
Microscopes designed for specialised applications. These specialised applications include, but are not limited to, enhanced classroom interaction through the use of multi-head teaching microscopes, fluorescence analysis and live cell viewing.

CONSUMABLES:

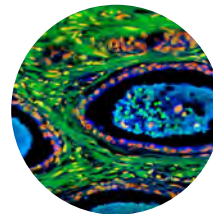
- Slides
- Coverslips
- Immersion Oil
- Lens Cleaning Tissue



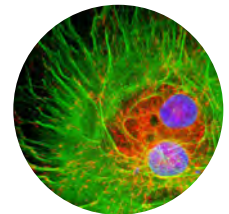
MOUSE INTESTINE



ENDOTHELIAL CELLS



HUMAN PROSTATE



FIBROBLAST CELLS

SPECIALITY MICROSCOPES	AREAS OF APPLICATION									
Fluorescence Compound Microscope BS-2080F	<input type="radio"/>				<input checked="" type="radio"/>		<input type="radio"/>	<input checked="" type="radio"/>		
Inverted Biological Microscope BS-2091	<input type="radio"/>	<input type="radio"/>			<input checked="" type="radio"/>			<input checked="" type="radio"/>	<input type="radio"/>	
Inverted Fluorescence Microscope BS-7020	<input type="radio"/>	<input type="radio"/>			<input checked="" type="radio"/>			<input checked="" type="radio"/>	<input type="radio"/>	
Multi-Head Advanced Teaching Microscopes BS-2080MH4 / MH6 / MH10	<input checked="" type="radio"/>				<input type="radio"/>			<input type="radio"/>		

Highly Recommended Suitable

FLUORESCENCE COMPOUND MICROSCOPES

BS-2080F FLUORESCENCE COMPOUND MICROSCOPE

465-476 nm excited wavelength with high signal-to-noise ratio (SNR) provides excellent fluorescent imagery, coupled with an infinite optical system. This technology is widely used in disease examination, immunology diagnosis and life science areas. There is no need for a cooling system or protection device, due to the LED cold light source.

- Excellent fluorescent image with infinite optical system
- Seidentopf trinocular head, inclined at 30°, interpupillary distance 48 - 75 mm
- Wide field eyepiece WF10× / Ø 22
- Infinite plan achromatic objective 4×, 10×, 40×, 100× (oil)
- Swing condenser NA 0.9 / 0.25
- Double layers mechanical stage 185 × 142 / 75 × 55 mm



INVERTED BIOLOGICAL MICROSCOPES

BS-2091 INVERTED BIOLOGICAL MICROSCOPE

A high-level microscope specially designed for medical and health units, universities, and research institutes to observe cultured live cells and tissues. The long working distance (LWD) infinite plan and phase contrast objectives makes the viewing field flatter, brighter, and in sharper contrast, to make live cell observation easier. With center-adjustable phase annulus, this specialised microscope allows for observation of low-contrast or transparent specimens. Cellphone or C-mount adapter available to connect a digital camera or smart phone to the microscope for image and video capture.

- Excellent optical function with infinite optical system.
- Seidentopf trinocular viewing head, inclined at 45°, 360° rotatable, interpupillary distance 50 - 75 mm
- Wide field plan eyepiece PL10×/ Ø 22
- LWD infinite plan phase contrast achromatic objective: PH 4×/ 0.13, WD 10.43 mm; PH 10×/ 0.25, WD 7.30 mm; PH 20×/ 0.4, WD 6.80 mm, PH 40×/ 0.65, WD 3.08 mm
- Includes glass insert, petri dish holder, metal plate Ø 25 mm
- An alternative fluorescence inverted microscope (BS-7020) is also available.

MULTI-HEAD BIOLOGICAL MICROSCOPES

BS-2080MH MULTI-HEAD BIOLOGICAL MICROSCOPE

High-level microscope equipped with a multi-head for simultaneous viewing of samples by multiple observers. Its integral stand design translates to small space occupancy. It is widely used in clinical and scientific research as well as for teaching demonstrations.

- BS-2080MH4 (2 Head) microscope package
- BS-2080MH6 (3 Head) microscope package
- BS-2080MH10 (5 Head) microscope package
- Seidentopf trinocular head, inclined at 30°, interpupillary 48 - 75 mm
- Extra wide field eyepiece EW10× / Ø 20
- Infinite plan achromatic objective 4×, 10×, 40×, 50× (oil), 100×
- Swing-out condenser NA 0.9 / 0.25
- Kohler illumination (LED)
- Green LED pointer



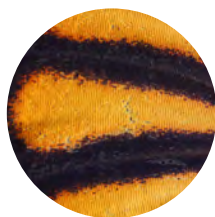
STEREO MICROSCOPES

Designed to view larger specimens in two and three dimensions. Stereo microscopes provide powerful solutions for viewing, analysis and documentation of large biological samples.

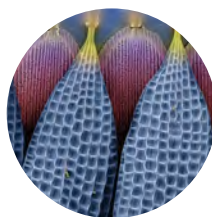
Stereo microscopes are also a valuable tool for quality control in the analysis of rough material surfaces.

CONSUMABLES:

- Petri dishes
- Dissecting kits



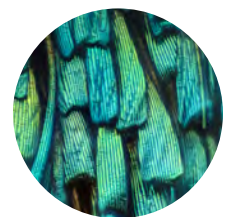
BUTTERFLY WING













BUTTERFLY WING



BUTTERFLY WING



MOTH WING

STEREO MICROSCOPES	AREAS OF APPLICATION									
										
Basic Stereo Zoom Microscopes BS-3020 / BS-3020T	○	○	○	●		○			○	○
Semi-Advanced Stereo Zoom Microscopes BS-3040 / BS-3040T	○	●	●	●		●	●	○	○	○
Advanced Stereo Zoom Microscopes BS-3060B / BS-3060BT	○	●	●	●		●	●	●	○	○
Advanced Stereo Zoom Microscopes with Fine Focus BS-3060C / BS-3060CT	○	●	●	●	●	●	●	●	○	○

● Highly Recommended ○ Suitable



BASIC STEREO / DISSECTING MICROSCOPES

BS-3020 STEREO ZOOM MICROSCOPE

Provides upright, un-reversed clear 3D images throughout the zoom range. Optional eyepieces and auxiliary objectives expand the magnification range and working distance possibilities. Optional cold light and ring light sources are available for this microscope as well as a choice of a trinocular head to allow for digital camera attachment.

- Including BS-3020B, BS-3020T
- Binocular or trinocular head, inclined at 45°, diopter adjustable
- Wide field eyepiece 10× / Ø 20
- Zoom objective 1× - 4.5×, zoom ratio 1:4.5
- High resolution, wide viewing field, working distance of 97 mm
- LED illumination: reflected and transmitted
- Includes eyepiece micrometre

MID-LEVEL STEREO / DISSECTING MICROSCOPES

BS3040 STEREO ZOOM MICROSCOPE

Provides un-reversed focused 3D images throughout the zoom range. A wide variety of magnifications, working distances, photo options and accessories, coupled with ease of use, make this microscope a popular choice, ideal for industry assembly lines, inspection and for use in teaching.

- Including BS-3040B, BS-3040T
- Binocular or trinocular viewing head, inclined at 45°
- Extra wide field eyepiece EW10× / Ø 22
- Zoom objective 0.8× - 5×, zoom ratio 6.3:1
- High-resolution, wide viewing field, working distance of 115 mm
- LED illumination: reflected and transmitted
- Includes eyepiece micrometre



The product images shown are for illustration purposes only and may not be an exact representation of the product.

E&OE



RESEARCH-LEVEL STEREO / DISSECTING MICROSCOPE

BS3060 STEREO ZOOM MICROSCOPE

These stereo microscopes provide the broadest range of magnification, working distances, photo options, and accessories. With an infinity parallel optical system these microscopes are great value for a variety of applications in industrial, medical and scientific research areas. Illumination and excellent life expectancy are a consequence of the use of LED light for both incident and transmitted illumination.

- Infinite parallel zoom optical system
- Including BS-3060B, BS-3060C based on different zoom objective (0.8x - 6.4x, 0.8x - 8x)
- Zoom ratio 1:8, 1:10
- Binocular or trinocular head, 20° inclination
- EW10x / Ø 22 eyepiece
- Coarse focus and fine focus knob with click stop
- Includes eyepiece micrometre

MICROSCOPE CAMERAS

Quality digital cameras facilitate image capture and documentation. The optional LCD screen attachments allow image viewing without an external computer or monitor.

MICROSCOPE CAMERA PACK (BUC2D SERIES) BASIC MICROSCOPE CAMERA (200CP, 500CP, 1200CP)

Widely used in the academic and medical fields for high precision and resolution image capturing and processing.

- Digital cameras available in 2 MP, 5 MP and 12 MP
- Sensor with high-resolution
- C-Mount camera includes video adapter (23 mm), as well as connecting rings (30 mm, 30.5 mm), and 1.8 m USB cable
- USB stick for software (free updates), and instruction manual
- 0.01 mm calibration slide (stage micrometer) included
- User-friendly software displays real-time live video on your PC screen. Allows for video and image capture
- Features include basic measurement tools, annotations and image editing
- Adapters available to fit other microscope brands



MICROSCOPE CAMERA (BUC5F SERIES) FOR LOW LIGHT AND FLUORESCENCE APPLICATIONS



Widely used for high-precision image analysis of low light, bright field, darkfield or fluorescence in life science and industrial applications.

- Digital SONY CMOS cameras available in 1.5 MP - 21 MP
- Scientific grade colour / mono image sensor provides high sensitivity and low image noise
- High frame rates – up to 17 frames for 21 MP resolution.
- Rolling shutter or Global shutter.
- C-Mount camera includes video adapter (23 mm), and 1.8 m USB cable
- CD or USB Stick including driver, software (free updates), and instruction manual
- User-friendly software displays real-time live video on your PC screen. Allows for video and image capture.
- Features include basic measurement tools, annotations, and image editing.
- Adapters available to fit other microscope brands

MICROSCOPE CAMERA (BLC SERIES) HIGH-DEFINITION LCD DIGITAL CAMERAS

Widely used in medical diagnosis, industrial production and inspection, laboratory research and related microscopy fields for image and video capture as well as analysis.

- Combines a full HD camera and an 11.6" retina HD LCD screen
- Uses BHC3 series Sony CMOS cameras, which are available in 5 MP (BLC-450) and 6 MP (BLC-600 and BLC-600 Plus)
- Scientific grade digital camera with HD colour reproduction and super-fast frame speed
- Image and video capture can be controlled by a mouse directly to the camera, or via PC using the user friendly software
- C-Mount camera can also be connected directly to an alternative LCD monitor or HD TV via HDMI cable provided. No software needed.
- CD including driver, software (free updates), instruction manual, HDMI cable, USB cable
- 16GB SD card supplied for storage of HD images and videos directly
- Features include basic measurement tools, annotations, image editing and image comparison





MICROSCOPE CAMERA (BHC3 SERIES) HIGH-DEFINITION (HDMI) CAMERAS

Suitable for applications requiring HD quality imaging, as well as remote medical diagnosis, industrial inspection, and live cell imaging. Can also be used for teaching and video projection in HD.

- Sony CMOS cameras available in 5 MP (BHC3E-1080P) and 6 MP (BHC3-1080P and BHC3-1080P PLUS)
- Scientific-grade digital camera with HD colour reproduction and super-fast frame speed.
- Image and video capture can be controlled by a mouse directly to the camera, or via PC using the user-friendly software
- C-Mount camera can be connected directly to an LCD monitor or HD TV via HDMI cable provided. No software needed.
- CD including driver, software (free updates), instruction manual, HDMI cable, USB cable
- 16 GB SD card supplied for direct storage of HD images and videos
- Features include basic measurement tools, annotations, image editing and image comparison.

ADDITIONAL MICROSCOPES

Ideally suited for advanced applications in medical and sanitary establishments, laboratories, institutes, academic laboratories, colleges and universities.



GEMOLOGICAL & METALLURGICAL MICROSCOPES

- Available for analysis of precious stones, metals and mineral stone analysis



POLARISING MICROSCOPES

- BS-5000 Series
- Available for schools and educational facilities



LCD DIGITAL MICROSCOPES

- BLM Series
- Available for both teaching and research applications



BASIC EDUCATION MICROSCOPES

- Available for schools and educational facilities

MICROSCOPE ACCESSORIES

A wide range of accessories are available for all microscopes and cameras, which allows you to customise and **enhance your microscope** to suit your application:

- Additional eyepieces and objectives
- Calibration slides
- Darkfield attachments
- Simple polarising attachments
- Phase contrast kits
- Epi-fl uorescence attachments
- Eyepiece and slide / stage micrometers
- Transport cases
- Camera adapters to fit BestScope and other brands
- External light sources with power supplies, including single or dual light guides, and ring light systems
- Various stands, stages, and base plates

MICROSCOPE CONSUMABLES



MICROSCOPE SLIDES

- Single or twin frosted
- Ground, cut or bevelled edges

COVERSLIPS

- Chemically resistant borosilicate 3:3 glass
- Colourless and clear
- Suitable for fluorescence microscopy



IMMERSION OIL

- Improve fine resolution and brightness of image through use of high-quality, certified immersion oils



FIXATIVE SPRAY

- Preserves histological and cytological tissue samples in a life-like manner



LENS CLEANING TISSUE

- Non-fibrous, lint-free
- Made from 100% manila fibres



PETRI DISHES

- Soda lime glass
- Plastic



DISSECTING KITS

- High-quality kit with zip, PVC pouch



CAPE TOWN

52 Old Mill Road
Ndabeni
Cape Town
7405

+27 21 531 7504

JOHANNESBURG

48 Gazelle Crescent
Gazelle Place
Corporate Park South
Randjiespark
Midrand
1685

+27 11 052 2500

DURBAN

Unit 3, Windsor
Court, Ground Floor
AFS House, 4 Derby
Place, Derby Downs
Westville
3629

+27 31 702 6001

PORT ELIZABETH

Unit 5.1, Building 3
Ascot Office Park
Block 7
Conyngham Street
Greenacres
6001

+27 41 373 9173

BLOEMFONTEIN

53 President Steyn
Avenue
Westdene
Bloemfontein
9301

+27 51 447 9500

PLEASE DIRECT ALL ENQUIRIES FROM OUTSIDE SOUTH AFRICA TO:

 52 Old Mill Road, Ndabeni, 7405, Cape Town PO Box 2110, Cape Town, 8000

 www.lasec.com

 +27 21 531 7504

 sales@lasec.com

 international@lasec.com