



## REASONS TO SWITCH TO PETRIFILM™

### BENEFITS

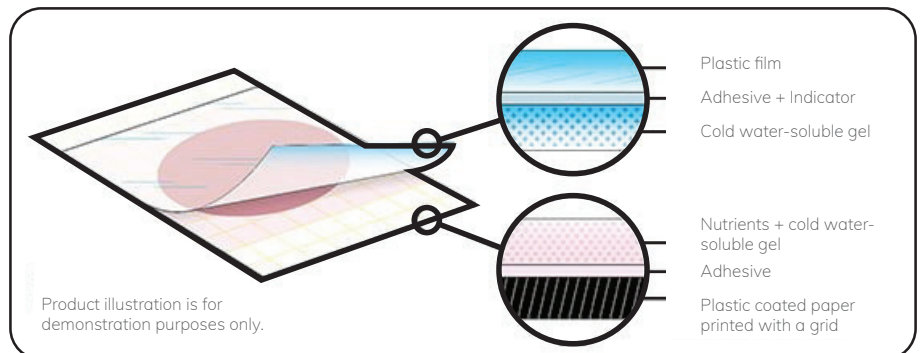
- ✓ Ready-to-Use Convenience
- ✓ Consistent and Reproducible Results
- ✓ Compact Design and Storage Efficiency
- ✓ Cost-Efficiency Over Time
- ✓ Enhanced Data Throughput with Plate Reader Compatibility
- ✓ Broad Application Range with Specific Solutions
- ✓ Validated for Food, Beverage and Environmental Testing

### PETRIFILM™ TYPES:

- Aerobic count
- *Enterobacteriaceae* Count
- Staph Express Count
- *E. Coli* and Coliform
- Select *E. Coli*
- Environmental *Listeria*
- Coliform count
- Aqua Heterotrophic (bottled water only)
- Yeast and Mould
- Lactic Acid Bacteria Count
- Bacillus Cereus Count

### RAPID RANGE:

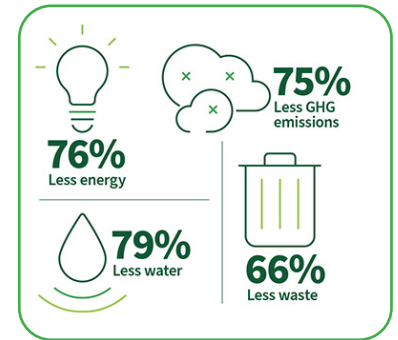
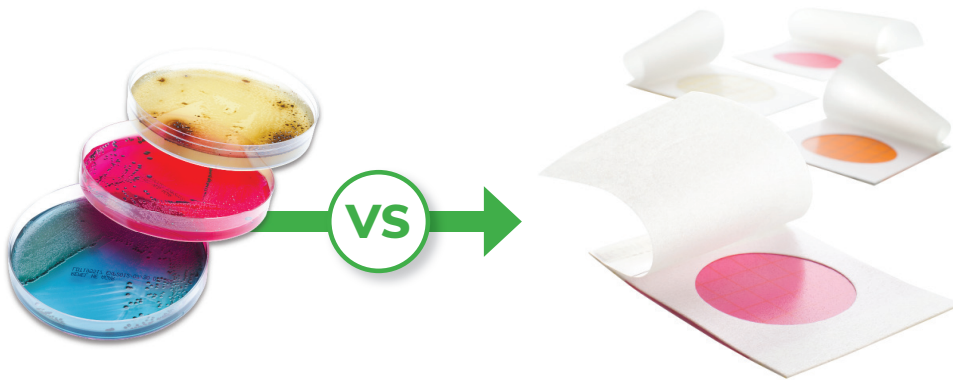
- Rapid *E. Coli* and Coliform Count
- Rapid Staph Express Count
- Rapid Yeast and Mould
- Rapid Aerobic Count



Contact your Lasec® Sales Representative today.

Ts & Cs apply

+27 21 531 7504    sales@lasec.com    www.lasec.com



\*Greenhouse gas

FEATURE	TRADITIONAL CULTURE MEDIA	PETRIFILM™
Preparation Period	1 - 2 hours per batch.	Ready-to-use.
Preparation Steps	<ol style="list-style-type: none"> <li>1. Weigh and mix media.</li> <li>2. Autoclave to sterilise.</li> <li>3. Cool and pour into plates.</li> <li>4. Optional storage in cold conditions.</li> </ol>	<ol style="list-style-type: none"> <li>1. Open Petrifilm™.</li> <li>2. Hydrate with sample.</li> <li>3. Press to distribute.</li> </ol>
Incubation Period	24 - 48 hours for aerobic bacteria, requires controlled temperature and atmosphere.	24 - 48 hours for aerobic bacteria, consistent incubation with minimal variability.
Labour Demand	<b>High:</b> Skilled technicians needed for precise preparation, sterilisation, and colony counting.	<b>Low:</b> Minimal training needed; simple inoculation and easier colony counting.
Labour per Plate	10 - 15 minutes for preparation, inoculation, and colony counting.	1 - 2 minutes for setup and colony counting.
Sample Throughput	<b>Lower:</b> Around 100 - 150 plates per technician per day.	<b>Higher:</b> Up to 500 plates per technician per day.
Batch Processing	Limited by cooling and preparation time; suited for smaller batches.	Optimised for high-volume testing with minimal downtime.
Large-Scale Testing Efficiency	Time-intensive setup limits throughput in high-demand settings.	High efficiency and consistency make it ideal for routine large-scale testing.
Overall Performance	Flexible for in-depth analysis and customised media; labour-intensive with slower turnaround.	Highly efficient with faster setup and throughput, ideal for standardised tests.
Materials Needed	Dehydrated Culture media, buffers, additives, hot plate / water bath, glassware, autoclave, pH meter, thermometer, fridge, incubator.	Fridge, Incubator.
Shelf-Life	± 8 days	± 12 months

Contact your Lasec® Sales Representative today.

Ts & Cs apply

+27 21 531 7504    sales@lasec.com    www.lasec.com