



SOLUTIONS FOR THE **PHARMACEUTICAL** INDUSTRY



[H]

ete.
98 05
980 011B
e.

Cb = pH[H⁺]
7.403.98E-08
7.602.51E-08
8.001.00E-08
8.403.98E-09
8.801.58E-09
9.001.00E-09
9.403.98E-10
9.801.58E-10
10.001.00E-10

02



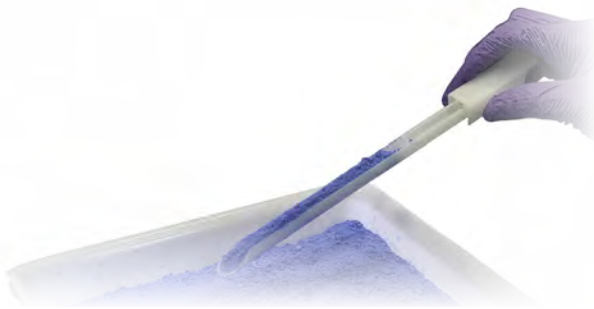
CONTENTS

COLD STORAGE		47
ENVIRONMENTAL CONTROL		49
FURNITURE		50
PRODUCTION & PACKAGING		45
QUALITY ASSURANCE	DATA INTEGRITY (LIMS)	17
	VALIDATION (IQOQ)	16
QUALITY CONTROL	FILTRATION	19
	GLASSWARE	21
	HARDWARE	26
	INSTRUMENTS	28
	MICROBIOLOGY	39
	PLASTICWARE	25
	STABILITY	38
RESEARCH & DEVELOPMENT (R&D)	BIOTECHNOLOGY	09
	TISSUE CULTURE	15
SAFETY	CHEMICAL	06
	GENERAL	08
SAMPLE COLLECTION		03
SERVICING		51

SAMPLE COLLECTION



Our range of products integrates seamlessly across all related categories, ensuring a cohesive, compliant, and reliable approach to laboratory and production quality control.



DISPOSABLE POWDER LANCE

Designed for cross-sectional sampling of bulk powders, supporting clean and reliable sample collection.

- Suitable for cross-sectional sampling through bulk powders
- Manufactured from food-grade HDPE in cleanroom conditions
- Individually bagged to minimise cross-contamination risk



DISPOSABLE POWDER SPATULAS

Designed for clean, reliable powder sampling in laboratory and production environments.

- Available in 150 mm and 250 mm lengths
- Manufactured in cleanroom conditions with Class 7 inspection and packing
- FDA and EC 1935/2004 & EU 10/2011 compliant
- BSE / TSE free



DISPOSABLE SCOOPS

Designed for clean, single-use sampling, enabling immediate use without the need for cleaning.

- Supplied sterile for direct use
- Manufactured and packed in Class 7 cleanroom conditions
- Individually bagged to ensure cleanliness



SACK AND BAG SAMPLER

Perfect for fast quality checks through the sides of sacks and bags. During sampling, the operator holds a bag or bottle over the rear end of the sampler to collect the powder or granules as they slide through.

- Made from high-quality HDPE
- Food and FDA-compliant grades
- BSE / TSE free
- Full batch documentation and certification supplied

AFTER SAMPLING

Seal the sack using one of the UA labels. The ultra-strong adhesive seals almost all sacks and bags securely.



LIQUITHIEF

Ideal for sampling low viscosity liquids, suspensions and thin oils. Each sampler is individually bagged, and is designed to be used straight from the bag.

- All the polymers are food grade, FDA grade and EC compliant, BSE / TSE free
- Batch certificates are available
- 3 lengths available in both sterile and non-sterile
- Available in both HDPE and PP construction



POWDERTHIEF

Suitable for taking representative samples from defined locations within bulk powders.

- Available in three lengths and six sample volumes
- Assembled and packed in cleanroom conditions
- Individually bagged to minimise cross-contamination
- Manufactured from FDA- and EU-compliant HDPE



SRK® ENVIRONMENTAL SAMPLE COLLECTION AND TRANSPORT SYSTEM

Pre-moistened swabs with SRK solution improve sample uptake from dry surfaces.

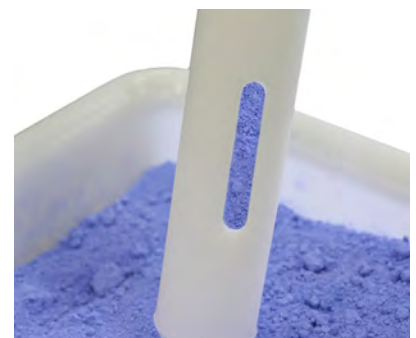
- SRK solution acts as both a neutralising agent and transport medium
- Includes a labelled screw-cap tube pre-filled with SRK solution
- Convenient swab attached to the tube cap ensures easy handling



DRY SAMPLE COLLECTION SWABS

Designed for microbial sampling of surfaces, equipment and environmental areas to support effective cleaning and sanitation programmes.

- Dry rayon-wrapped swab
- Sterile fibre construction
- Plastic applicator supplied in a dry tube
- Supports hygiene monitoring in production environments



STERIWARE POWDER SAMPLER

A sterile, disposable sampler designed for collecting a single large-volume sample from a defined point.

- Ideal for single-point sampling of powders and granules
- Suitable for sampling depths of up to 1 m
- Disposable, single-use design



REUSABLE PHARMA SCOOPS

Designed for reliable handling of powders and granules across laboratory and production environments.

- Manufactured from heavy-gauge 316 l stainless steel
- Wide size range available, from 250 ml up to 4000 ml, including over 11 standard sizes
- Each scoop supplied with a certificate of conformity

STAINLESS STEEL DIPPERS

Designed for controlled sampling of liquids and low-viscosity materials.

- Stainless steel cup securely welded to a long-reach handle
- Constructed from 316 l stainless steel for corrosion resistance and longevity
- Available with 600 mm, 1000 mm, or 1500 mm handles



TABLET / CAPSULE SAMPLER

This sampler enables consistent, cross-sectional collection from bulk containers in pharmaceutical environments.

- Designed to collect samples from five points throughout the container
- Supports representative quality control testing
- Supplied as standard in a 1 m length



UNIT-DOSE LIQUID SAMPLER

This sampler provides precise volume control for pharmaceutical quality control applications.

- Enables accurate unit-dose sampling up to 60 ml
- Uses a medical-grade syringe housed within a stainless-steel sampler
- Suitable for regulated pharmaceutical environments

UNIT-DOSE SLEEVE SAMPLER

This sampler supports accurate unit-dose collection in pharmaceutical environments.

- Ideal for free-flowing powders
- Sample volumes range from 0.1 ml to 2.5 ml
- Widely used in pharmaceutical quality control settings





Lasec® is the proud distributor of asecos, the German designed and manufactured range of safety storage cabinets. Their products are engineered to meet rigorous European Standards, particularly EN 14470-1 and EN 14470-2.

CHEMICAL SAFETY STORAGE

Acid and Alkali Storage Cabinets

Designed for the safe storage of corrosive substances used in laboratory analysis, mineral processing, and cleaning applications.

- Corrosion-resistant inner lining and fittings
- Non-metallic hinges and seals
- Under-bench or tall cabinet formats
- Separate compartments for incompatible acids and alkalis



Combination Chemical Storage Cabinets

Engineered for the simultaneous safe storage of flammable and aggressive chemicals in separate, fire-resistant compartments. Suitable for storing flammables, acids, bases, corrosives, and toxic chemicals.

- 90-minute fire resistance (EN 14470-1)
- Integrated, corrosion-resistant, metal-free ventilation ducts suitable for exhaust connection (e.g., DN 75)
- Lockable doors with cylinder lock and status indicator to prevent unauthorised access
- Door-open arrest system for ease of access
- Compatible with fume hoods
- Optional castors available for mobility

Flammable Storage Cabinets (Type 90 – EN 14470-1 Certified)

Provides 90-minute fire protection for the safe storage of flammable liquids in laboratories, processing plants, and maintenance environments. Suitable for storing fuels, solvents, degreasers, and other flammable liquids.

- 90-minute fire resistance (EN 14470-1)
- Automatic door closure in the event of fire
- Ventilation-ready design
- Integrated spill containment trays
- Durable, chemical-resistant construction



Lithium-Ion Battery Storage Cabinets

Provides safe storage and charging of lithium-ion batteries used in battery-powered equipment, tools, and vehicles.

- 90-minute fire protection (EN 14470-1 and EN 14470-2)
- Integrated fire suppression system
- Thermal monitoring and alarms
- Active ventilation and smoke detection
- Lockable, ventilated charging compartments

FUME HOODS AND SCRUBBERS

Systems designed to control exposure to hazardous fumes, vapours, and airborne particulates during sample preparation, digestion, and wet chemistry processes. By capturing contaminants at the source and removing them through high-efficiency filtration or wet scrubbing technology, these solutions support safe, compliant laboratory workflows.

Acid Fume Scrubbers

The ENVIRO range is built for the safe removal and neutralisation of acid fumes extracted from laboratory fume cupboards, supporting clean air standards.

- Available for single or multiple fume cupboard extraction
- Polypropylene construction for excellent resistance to corrosive chemicals
- Removes 98 % + of acid contaminants
- Automated smart dosing for consistent neutralisation
- Suitable for all commonly used laboratory acids, helping prevent harmful emissions within and around the lab



COMPOUNDING HOODS

Ductless containment solutions for safe handling and weighing of toxic compounds.

- Powdersafe™ ductless enclosure design
- HEPA filtration for effective operator protection
- Maintains balance stability during weighing
- Durable, easy-to-clean construction
- Factory leak tested and supplied fully assembled
- Available from balance enclosures to large batch sampling sizes



EYEWASH STATIONS

Eyewash solutions designed to provide safe and gentle decontamination in case of eye exposure.

- Eyewash bottle made from polyethylene
- Air vent valve prevents backflow of contaminated liquid
- Perforated spray plate breaks the stream for gentle eye wash



GLOVES

- Durable gloves for laboratory handling and protection in compliance with safety standards
- Latex or Nitrile



LAB COATS

Protective lab wear for personnel in laboratory and production environments.

- Available in reusable or disposable formats
- Various sizes available



SAFETY GLASSES

Protective eyewear for laboratory personnel to prevent exposure to chemicals and particles.



Our portfolio is designed to meet the evolving needs of pharmaceutical laboratories, research institutions, and biomanufacturing facilities, ensuring accuracy, reliability, and regulatory compliance at every stage.

AUTOMATED LIQUID HANDLING SOLUTIONS

SPT Labtech's automated liquid handling systems enable accurate and scalable liquid handling for pharmaceutical research applications. They support assay development, compound management and miniaturised workflows, helping laboratories maintain consistency, efficiency and compliance.

dragonfly® discovery

Enables precise, reproducible multi-channel dispensing for a wide range of liquids.

- Non-contact dispensing with positive displacement syringes
- Accurate and repeatable volumes from 200 nL - 4 ml
- Handles viscous, volatile and DMSO-based liquids
- Supports dose-response studies and high-throughput workflows
- Reduces reagent consumption and overall operational costs



firefly®

Integrates multiple liquid handling technologies in a compact system, automating complex workflows to improve efficiency and precision in sample and library preparation.

- Supports pipetting, dispensing, mixing and temperature control
- Automates compound titrations, assay setup, serial dilutions and qPCR plate preparation
- Enables high-content screening and precision miniaturisation
- Handles low- to mid-range liquid volumes
- Streamlines library and sample preparation workflows

mosquito[®]

Combines miniaturisation and automation to deliver accurate, low-volume dispensing while enhancing laboratory productivity and reducing costs.

- Positive displacement pipetting with non-contact operation
- Accurate volumes from 25 nL to 1.2 µl
- Minimises cross-contamination risk
- Handles a wide range of viscosities and biological samples
- Supports automated, high-throughput workflows



BIOLOGICS ANALYSIS WORKFLOW

Provides an integrated solution for biologics quality control, supporting compliant, reproducible analysis across development and production workflows.

- Combines Criterion TGX[™] Precast Gels, QC Colloidal Coomassie Stain and the GS-900 Calibrated Densitometer
- Powered by Image Lab Software with 21 CFR Part 11 compliance
- Supports protein quantitation, sizing and contamination detection
- Enables assessment of viral vector purity for gene therapy applications
- Delivers consistent, high-quality results in biopharmaceutical quality control

BIOMARK[™] X9 SYSTEM

A microfluidics-based benchtop platform for high-throughput genomics applications, supporting efficient workflows from discovery through to screening.

- Supports real-time PCR and NGS library preparation in a single system
- Generates up to 9,216 PCR datapoints in 2 hours
- Prepares up to 384 barcoded, NGS-ready libraries in 8 hours
- Enables nanoscale reaction volumes for cost-effective, scalable profiling
- Suitable for gene expression, rare variant detection and pharmacogenomics



BIO-PLEX 200 AND BIO-PLEX 3D SYSTEMS

Provide automated multiplex immunoassay solutions for cytokine profiling and biomarker analysis in pharmaceutical and clinical research environments.

- Supports multiplex analysis for cytokines and biomarkers
- 21 CFR Part 11-ready software with complete IQ / OQ services
- Pre-designed panels for streamlined biomarker studies
- Custom assay capability using Luminex MagPlex[®] bead technology
- Enables scalable, reproducible immunoassay workflows



BIOREACTORS

Ergonomic, reliable, and compact benchtop bioreactor designed to optimise laboratory workflows across a wide range of applications.

- Award-winning design engineered for high performance and user-centric operation
- Supports mammalian cell culture, microbial fermentation, and phototrophic cultivation
- Advanced sensors and accessories enhance control and efficiency
- Available in single- or double-walled vessels, 0.5 - 10 l volumes
- Compatible with thermostats or light panels for tailored thermal or illumination control
- Three stirrer geometries: 6-blade disc, 3-blade segment, or paddle; adapt to different processes
- Space-efficient design combines versatility, performance, and ease of use for controlled studies

DROPLET DIGITAL PCR (ddPCR)

Droplet digital PCR enables absolute nucleic acid quantification with high sensitivity, supporting detection of rare genetic biomarkers and low-abundance targets in pharmaceutical research and quality control. The technique supports compliant, reproducible workflows in regulated laboratory environments.



QX200 Droplet Digital PCR (ddPCR)

Provides high sensitivity and precision for detecting rare genetic biomarkers in pharmaceutical research, drug discovery and quality control.

- Supports multi-gene analysis across diverse sample types
- Suitable for liquid biopsies, tissues and cell lines
- Enables reliable detection of low-abundance targets
- Compatible with validated PrimePCR™ Panels
- Supports reproducible, high-confidence results



QX600 Droplet Digital PCR System

Extends droplet digital PCR capabilities with six-colour multiplexing for high-throughput, multi-target analysis in pharmaceutical research and quality control.

- Six-colour multiplexing for simultaneous gene or variant quantification
- Enables multi-target analysis in a single well
- Supports oncology, and cell & gene therapy applications
- Suitable for pharmaceutical quality control workflows
- Compatible with validated PrimePCR™ Panels

MULTIMODE PLATE READERS

Support compound screening and assay development across pharmaceutical discovery, preclinical and clinical research. They enable reliable data generation for complex and multiplexed assays in high-throughput environments.

CLARIOstar[®] Plus

Provides flexible, multimode detection to support a wide range of assay types across pharmaceutical research workflows.



- Supports absorbance, luminescence, fluorescence and AlphaScreen[®] detection
- Suitable for diverse assay formats and applications
- Enables reliable measurement in complex, multiplexed assays
- Supports scalable screening and assay development workflows

VANTASTAR[®] Series

Designed for high-throughput screening applications, delivering accurate and stable measurements while minimising reaction volumes.



- Supports 96-, 384- and 1536-well plate formats
- Optimised for high-throughput compound screening
- Enables reduced reaction volumes without compromising data quality
- Suitable for scalable pharmaceutical screening workflows

NGC MEDIUM-PRESSURE LIQUID CHROMATOGRAPHY SYSTEMS

Support process-scale purification of protein- and antibody-based biologics, with flexibility from discovery through to scale-up in regulated environments.

- Compact, upgradeable platforms for process-scale purification
- Suitable for protein and antibody-based biologics
- 21 CFR Part 11-ready software with complete IQ / OQ services
- Modular design to support evolving purification strategies
- Compatible with chromatography resins for biosimilar development and scale-up



SCALABLE RESINS

Support consistent biomolecule purification across preparative and analytical scales, from early development through to commercial production.

- Suitable for protein and biomolecule purification workflows
- Supports scale-up from small-scale to commercial processes
- Enables consistent, reproducible purification performance
- Compatible with process development and production environments
- Supports efficient biopharmaceutical development workflows

ZE5 CELL ANALYSER

Supports high-throughput, multi-colour flow cytometry for pharmaceutical discovery, preclinical and clinical research.

- Detects up to 30 parameters for high-dimensional cell analysis
- Suitable for live and fixed cell analysis
- Clog-free design for reliable operation during intensive workflows
- Supports immunocytochemistry and immunohistochemistry applications
- Enables biomarker studies, immunophenotyping and drug response profiling



96- AND 384-WELL PLATE FILLERS

Fast and accurate pipetting systems for filling microplates in high-throughput laboratory workflows.

- Fill an entire 96-well plate in under 10 seconds, or a 384-well plate in under one minute
- Ideal for time-sensitive applications such as drug screening, enzymatic assays, and NGS
- Supports high-throughput workflows efficiently and reliably



PCR TUBES & STRIP TUBES

We specialise in high-quality PCR solutions, offering both individual PCR tubes and PCR strip tubes tailored to meet your laboratory needs. Our products are designed for optimal performance and reliability, ensuring the integrity of your samples throughout the amplification process.

- Certified free of RNase, DNase, DNA, PCR inhibitors, and tested pyrogen-free
- Ultra-thin, uniform wells ensure optimal heat transfer and reaction efficiency
- Available with dome, frosted flat, or optically-clear caps for qPCR
- Strip tubes are available with angular caps, separate caps, or hinged attached caps
- Available in 8-strip or 12-strip configurations
- Feature robust 3-point interwell linkages for increased rigidity



PCR PLATES

- Manufactured from virgin, medical-grade U.S. FDA approved polypropylene
- High thermocycler compatibility
- Well ridges reduce sample evaporation when sealing with film, foil, or associated strip caps
- Alphanumeric indexing
- Ultra-thin, uniform wells ensure optimal heat transfer for high reaction efficiency
- Certified free of detectable DNase, RNase, PCR inhibitors and tested pyrogen-free

PCR RACKS

- Accommodates PCR strips and various 96-well PCR plates
- Stackable
- Stable work platform
- Comes with a lid



ISOFREEZE RACKS

- Sample temperature maintained up to 4 hours at less than 4 °C
- Dramatic colour change once the rack reaches 7 °C
- Suitable for PCR



END-POINT PCR SYSTEMS

PTC Tempo Thermal Cycler

The PTC Tempo Thermal Cycler is designed for laboratories requiring dependable end-point PCR. It offers precise temperature control and uniformity, ensuring consistent amplification results for routine testing and method development. Built with simplicity and robustness in mind, the system is well suited to pharmaceutical environments where reliability and ease of use are essential.

- Excellent temperature accuracy and uniformity for reproducible results
- Flexible block formats to support different throughput requirements
- User-friendly interface for streamlined workflows



REAL-TIME PCR SYSTEMS

CFX Opus Real-Time PCR System

The CFX Opus Real-Time PCR System delivers high-performance detection and analysis, enabling accurate quantification of nucleic acids across a wide range of pharmaceutical applications. It supports laboratories in achieving reliable results while maintaining compliance standards. With enhanced optical performance and intuitive software, the CFX Opus system ensures confidence in data quality, making it ideal for regulated environments.

- High sensitivity and dynamic range for accurate quantification
- Multiplexing capability for efficient assay design
- Designed to support data traceability and audit readiness
- Consistent performance to meet stringent quality requirements
- Scalable workflows to align with GMP environments



LABCHIP® GXII TOUCH™ HT PROTEIN CHARACTERISATION SYSTEM

Offers an automated alternative to traditional methods by streamlining slab gel electrophoresis, while also providing the increased throughput required by biotherapeutics and genomics workflows. This flexible instrument supports multiple assays for characterising both proteins and nucleic acids.

- | | |
|---|---|
| <ul style="list-style-type: none"> • Ease-of-use • Flexible • Cost-effective • Increased efficiency | <ul style="list-style-type: none"> • High-throughput • Small footprint • Fast analysis • Supports testing in a streamlined and reproducible GMP-compliant environment |
|---|---|



The product images shown are for illustration purposes only and may not be an exact representation of the product.



CELL CULTURE FLASKS

- Variety of surface treatments
- Standard or filter screw cap
- Angled neck for easy access with a cell scraper / pipette
- Graduated measuring grid
- Stackable
- Free of detectable DNase, RNase, human DNA
- Non-cytotoxic and non-pyrogenic



CELL CULTURE PLATES AND DISHES

- Suitable for adherent and suspension cell culture
- Various surface treatments available
- Reduced cross-contamination
- Stackable
- Alphanumeric indexing
- Free of detectable DNase, RNase, human DNA
- Non-cytotoxic and non-pyrogenic



CELL CULTURE ROLLER BOTTLES

- Polystyrene or PET bottles
- Standard or filter screw cap
- 850 cm² to 4,250 cm² growth area
- With or without a ribbed surface
- Free of detectable DNase, RNase, human DNA
- Non-cytotoxic and non-pyrogenic

CELL CULTURE SCALE UP

- Multilayer cell culture device suitable for mass cell culture
- Covers a 250 cm² to 10,000 cm² growth area
- Gas distributed uniformly between layers
- Two surface treatments available: Standard and Advanced Tissue Culture
- No contact between the cell layers ensuring flawless media exchange
- Free of detectable DNase, RNase, human DNA
- Non-cytotoxic and non-pyrogenic



CELL STRAINERS

- Flexible fit
- Suitable for 1.5 ml to 50 ml tubes
- Mesh sizes: 20, 40, 70 and 100 µm
- Sterile single packaging prevents risk of contamination

MAGNETIC 3D CELL CULTURE

Enables rapid formation of in vivo-like 3D cell models, supporting more predictive drug testing and high-throughput research.

- Uses NanoShuttle-PL to magnetise cells
- Supports 3D model formation across multiple cell types
- Integrates seamlessly with existing 2D workflows
- Suitable for high-throughput screening studies
- Enables more physiologically relevant drug testing



IQQQ DOCUMENT

INSTALLATION QUALIFICATION / OPERATIONAL QUALIFICATION

EQUIPMENT NAME:

MODEL / SERIAL NUMBER:

We assist with protocol completion and work closely with regulatory teams and validation officers to ensure full compliance with international and company-specific requirements.

Instrument Qualification IQOQPQ Protocols

After many years of supplying quality, dependable solutions and services to the pharmaceutical industry, we have an in-depth understanding of the requirement of the industry to establish documented evidence that instruments are fit for purpose and performing to specifications.

Lasec® can provide assistance with IQ, OQ and PQ protocol completion after installation of a new device, after moving, after repairs, or after any other activity, in order to meet regulatory requirements.

Completion of protocols, in collaboration with your validation department, are performed by expert service engineers, product managers or application specialists, who have been trained by the manufacturer.

IQQQPQ Services Provided include:

- **Installation Qualification (IQ):**
Documented verification that equipment is installed to manufacturers' recommendations.
- **Operation Qualification (OQ):**
Documented verification that equipment (as installed) is operating as intended to manufacturers' specifications.
- **Performance Qualification (PQ):**
Documented verification that equipment can perform effectively and reproducibly, based on approved manufacturers' specifications.
- **Re-Qualification (OQ or OQ/PQ):**
Documented verification that equipment continues to operate as specified by the manufacturer. Performed 1 year after an initial IQ, OQ, PQ has been completed, or according to SOP requirements.

Laboratory Information Management System (LIMS): Streamline your laboratory operations with confidence



Highly flexible and robust, LabVantage Pharma LIMS scales and supports your organisation, whether you are monitoring quality control for launching your first product or collecting stability data on multiple products. Advanced functionality, too, like predictive and prescriptive analytics, helps digitally transform your organisation, so you can streamline processes, boost productivity, and leverage valuable scientific and business insights from your data.

LabVantage Pharma LIMS is a purpose-built Laboratory Information Management System designed specifically for pharmaceutical and biopharmaceutical organisations. It addresses key challenges in the industry, providing an integrated, compliant, and fully digital platform that enhances productivity, ensures regulatory compliance, and supports data-driven decision-making.

Challenges faced in Pharma Labs

- **Regulatory Compliance:**
Adhering to FDA 21 CFR Part 11, EU Annex 11, and other global regulations.
- **Data Integrity:**
Ensuring ALCOA+ principles (Attributable, Legible, Contemporaneous, Original, Accurate) are consistently met.
- **Operational Efficiency:**
Reducing manual entry, errors, and redundant processes.
- **Sample & Batch Management:**
Handling high volumes of test samples with precision and traceability.
- **Audit Readiness:**
Maintaining detailed, readily accessible audit trails.



The product images shown are for illustration purposes only and may not be an exact representation of the product.

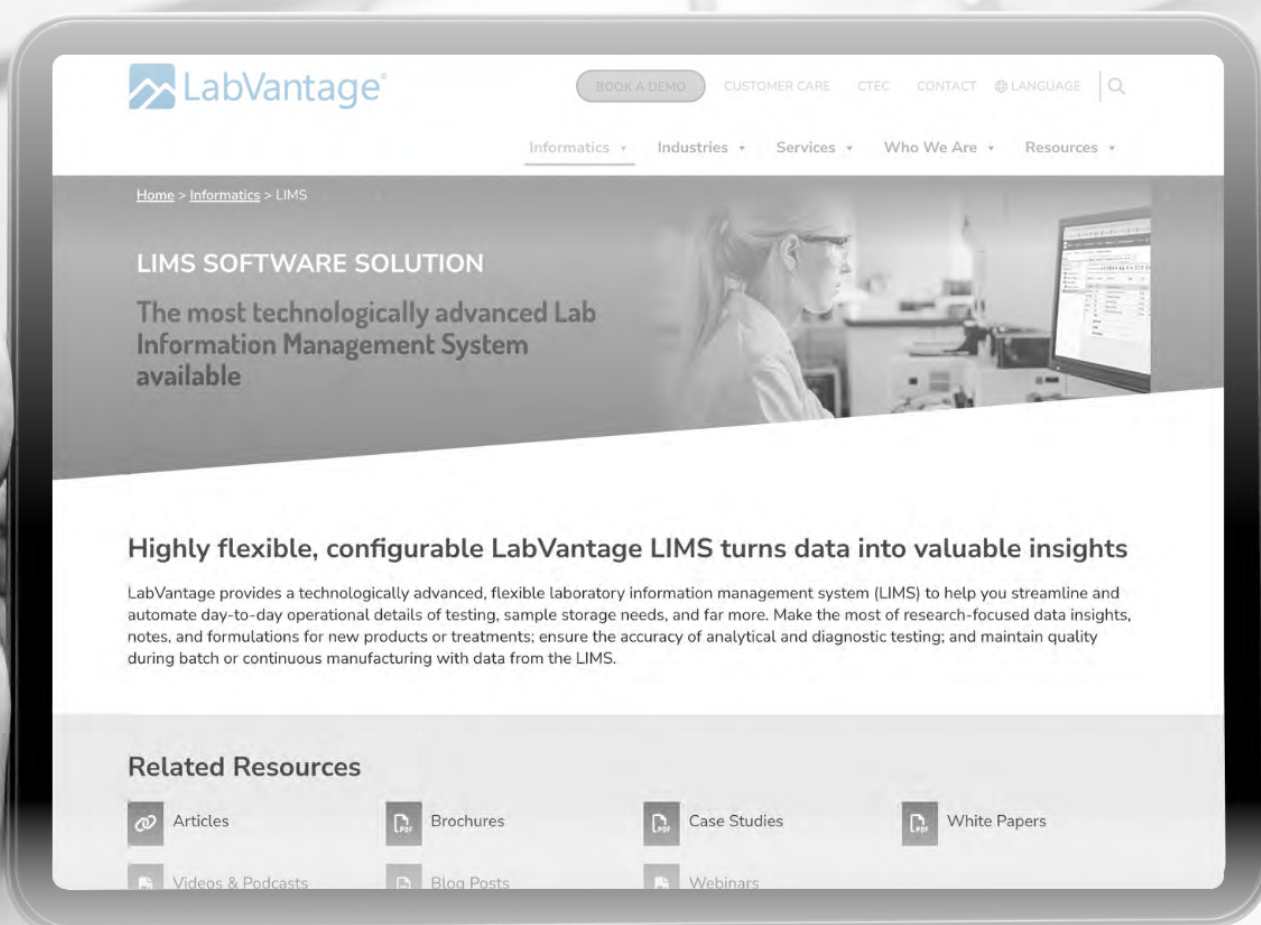
E&OE

How LabVantage Pharma LIMS helps

LabVantage Pharma is pre-configured to meet the needs of GxP-compliant laboratories and includes workflows for stability studies, environmental monitoring, batch release, and more. With out-of-the-box validation documentation, it significantly reduces implementation time and risk.

Count on LabVantage Pharma for:

- Out-of-the-box fully operational and functional, pre-validated LIMS pre-configured with pharma and biotech templates and workflows
- Pre-validation in compliance with GAMP 5 guidelines
- Compliance with FDA 21 CFR Part 11, European Union's EudraLex Annex 11, and other global regulations
- Centralised, structured, and searchable data with full traceability
- Rapid, reduced-risk deployment, ideal for labs with limited IT resources
- Embedded ELN, LES, and SDMS for managing day-to-day operations, research, and data management – no point solutions to knit together
- Deploy via validated SaaS or on-premises
- Multisite, multilingual support





Quality control is essential to ensuring the safety, efficacy, and consistency of pharmaceutical products. Our curated range of solutions supports accurate testing and reliable analysis across laboratory workflows.



BENCH PROTECTION

- Two layer surface protection
- Highly absorbent cellulose
- Impermeable polyethylene

FILTER PAPER

- Quantitative or qualitative
- Various grades and pore sizes available
- Various diameters available
- Hardened versions available

GLASS FIBRES

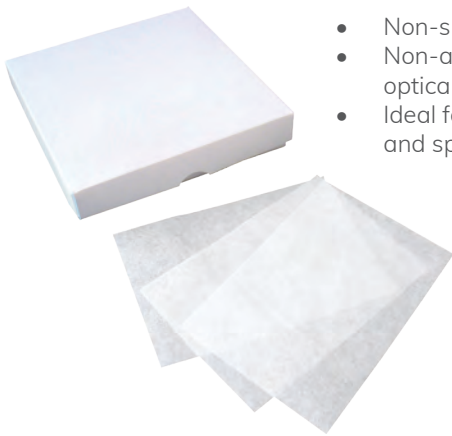
- For suspended solids test and clarification
- With or without binder
- Various pore sizes available including 1.6 μm
- Various diameters available



GLASS FILTRATION SYSTEM

- 3 piece, all glass system
- 47 mm diameter
- 300 ml filter holder volume
- 1000 ml filter flask volume

LENS CLEANING TISSUE



- Non-shedding and lint-free
- Non-abrasive, safe for delicate optical surfaces
- Ideal for lenses, microscopes, and spectrometers



MEMBRANE FILTERS

- Cellulose nitrate, Cellulose acetate, PTFE (for corrosive substances) or Nylon (for HPLC)
- Sterile or non-sterile

SYRINGE FILTERS



- Cellulose acetate, nylon, PTFE or PVDF
- Sterile or non-sterile
- Pore sizes of 0.45 μm or 0.2 μm available
- ID 25 mm, OD 33 mm



VACUUM MANIFOLDS

- 3 and 6-place options available
- Various column types to select from
- Funnels available in glass or stainless steel

Full filtration manifold packages available

WEIGHING PAPER

- Smooth
- Semi-transparent
- Cellulose fibre





BURETTES

- Dr. Schilling**
- Class A borosilicate 3:3 glass
 - Calibrated "Ex" (to deliver)
 - Automatic zero adjustment
 - Complete with plastic bottle and stable plastic base
- Straight Bore**
- Class A borosilicate 3:3 glass
 - Calibrated "Ex" (to deliver)
 - Graduated
 - Batch or Individual Certification available
 - Glass, Teflon (PTFE) or rotaflo stopcock option



CRUCIBLES

- Silica, soda-lime or borosilicate
- Low or tall form
- Glazed options available
- Lids available



CYLINDERS

- Measuring**
- Class A borosilicate 3:3 glass
 - Spouted or stoppered
 - Graduated
 - Hexagonal or round base
 - Batch or Individual Certification available
- Nessler**
- Class A borosilicate 3:3 glass
 - Graduated
 - Batch or Individual Certification available

DISHES

- Crystallising**
- With or without spout
- Petri**
- Soda lime glass or plastic





FLASKS

- Erlenmeyer**
 - Class A borosilicate 3:3 glass
 - Wide or narrow neck
 - Plain, ground neck or screw cap
- Filter**
 - Class A borosilicate 3:3 glass
 - Plain or ground neck
 - With side arm
- Volumetric**
 - Class A borosilicate 3:3 glass
 - Amber or clear
 - With plastic or glass stopper
 - Batch or Individual Certification available



FUNNELS

- Buchner**
 - Class A borosilicate 3:3 glass
 - Porcelain options available
 - Glass - with sintered disc
- Filter**
 - Class A borosilicate 3:3 glass
 - With long or short stem
- Separating**
 - Class A borosilicate 3:3 glass
 - Glass, teflon (PTFE) or rotaflo stopcock options
 - Pear or conical shapes available
 - With polypropylene stopper

MORTARS AND PESTLES

- Porcelain or Class-A borosilicate 3:3 glass
- Porcelain – completely glazed, or glazed on outside only



OINTMENT JARS

- Various sizes
- With or without Polypropylene cap





PIPETTES

- Pasteur**
- Soda-lime glass
 - With or without cotton plug
 - Various sizes available: 150 mm or 230 mm
- Serological**
- Graduated
 - Batch or Individual Certification
 - Calibrated "Ex" (to deliver)
- Volumetric**
- Batch or Individual Certification
 - Calibrated "Ex" (to deliver)



TUBES

- Capillary**
- Heparinised options available
 - Sigillum wax available
- Melting Point**
- Determination of melting point
 - May be used for sample storage
- Test**
- Soda-lime or Class-A borosilicate 3:3 glass
 - Round bottom
 - With or without rim
 - Graduated or ungraduated



VIALS

- Chromatography**
- Head space
 - Crimp top
 - Screw neck
 - Snap ring
- Diagnostic**
- With caps or rubber stoppers
- Pill**
- With stoppers
- Scintillation**
- With or without caps
- TOC (Total Organic Carbon)**
- With bonded cap and PTFE lined silicone septa
- Vaccine**
- Clear or amber
 - Rubber stoppers and aluminium seals available
 - Crimpers available



WEIGHING SCOOPS

- Made of borosilicate glass with open tubular arm
- Ideal for weighing small quantities of powders and dyes
- Available in 3 ml, 6 ml, and 10 ml capacities

BEAKERS

- Low or tall form
- Spouted
- Graduated



BOTTLES

Dropping

- Amber or clear
- With rubber teat or glass stopper

McCartney

- Soda lime glass
- Narrow or wide neck
- Autoclavable
- Aluminium screw cap

Media

- Graduated
- Amber or clear
- Autoclavable
- Blue polypropylene GL 45 screw cap and pouring ring

Reagent

- Amber or clear
- Narrow or wide neck
- With glass or plastic stopper



Safety Coated Glassware

Reducing the risk of breakage and contamination in laboratory and industrial settings, safety coated glassware provides protection from scratches and minimises collision impacts.

The transparent slip-resistant surface enhances grip, grasp, and stability. Safety coated glassware is available in a range of media bottles, measuring cylinders and volumetric flasks.



Helps contain broken glass & spillage



Temperature stability



UV protection up to approx. 380 nm



Helps maintain the electrostatic charge



Autoclavable at 121 °C

BOTTLES

- Sample**
- Wide or narrow neck
 - Round or square
 - With or without cap
 - Polyethylene or polypropylene
- Storage**
- With or without stopcock
 - Ideal for bulk storage or transport of liquids
 - Polyethylene
- Wash**
- Non-labelled and labelled bottles available
 - Labels allow for easy identification of contents e.g. acetone, methanol, distilled water, isopropanol polyethylene



CUVETTES

- Macro or micro volumes
- Characterised by minimal light scatter with high transmission
- Quartz glass or crystal-clear polystyrene

DESICCATORS

- Plastic knobbed or vacuum stopcock
- Complete with porcelain plate



PIPETTES

- Pasteur**
- Graduated or non-graduated
 - Sterile or non-sterile
 - Bulk or individually wrapped
- Serological**
- Graduated
 - Sterile
 - Bulk or individually wrapped



SYRINGES

- Smooth flow
- Sterile in peel pack
- Latex free
- Medical grade polypropylene



TUBES

- Centrifuge**
- Graduated
 - Sterile
 - Bulk, racked or individually wrapped
 - Free-standing tubes available
- Microcentrifuge**
- Graduated
 - Safe temperature range of -90 to 121 °C
 - Certified free of RNase, DNase & DNA and PCR inhibitors
 - Coloured options available
- Screwcap micro**
- Temperature range of -196 to 121 °C
 - Skirted or conical bases
 - Numerous cap and tube combinations available for specific applications
 - Medical grade polypropylene
- Test**
- Graduated or non-graduated
 - Round or conical based
 - Stoppered, screw caps or snap cap options available
 - Polystyrene or polypropylene



WEIGHING BOATS

Convenient disposable containers for accurate weighing and transfer of powders and granules.

- Available sizes: 7 ml, 30 ml, 100 ml
- Shapes: square or diamond



CLAMPS

Durable clamps for secure support of laboratory glassware and apparatus during experiments.

- Burette clamps – double or single
- Retort clamps – 2, 3, or 4 prong
- Retort rings with bossheads – various sizes available



DIGITAL TIMERS

Reliable timers for accurate timekeeping in laboratory workflows.

- Up / down function
- Jumbo display
- 3- or 4-channel operation



PAPER WIPES & STAND

Consumable wipes and dispensers for cleaning, drying, and general laboratory hygiene.

- 1- or 2-ply white paper
- Various sizes available
- Roll form
- Stand made of metal



PARAFILM

Flexible laboratory film for sealing and protecting containers and samples.

- Widths: 50 mm, 100 mm, and 500 mm
- Various lengths available
- Compatible Parafilm dispensers available



POWDER FUNNELS

Stainless steel powder funnels for hygienic and efficient transfer of powders in laboratory workflows.

- Wide-diameter outlet prevents blockages
- Made from 316 l stainless steel
- Outlet ends with tri-ferrule fitting for clamping to other equipment

STAINLESS STEEL CLAMP TOP BOTTLES

Durable containers for storage and transport of powders and liquids in laboratories and production.

- Crevice-free, powder- and watertight design
- Lid design: 2" tri-ferrule (BS4825-3) with clamp and silicone seal
- Made from 316 l stainless steel
- Available in 3 sizes: 250 ml, 500 ml, 1000 ml





STAINLESS STEEL CONTAINERS

Airtight, food- and FDA-compliant containers for secure storage of powders, liquids, and other materials.

- Supplied with lid and silicone seal
- Quick-release lid for easy access
- Standard 4" tri-ferrule fitting (BS4825)
- Certificate of conformity included
- Available in sizes: 1000 ml – 30 000 ml

STAINLESS STEEL MINI POTS

Small-volume, multi-purpose stainless steel containers for laboratory and production use.

- Made from 316 l stainless steel, crevice-free
- Screw-on lid
- Stock sizes from 5 ml – 1,000 ml
- BSE / TSE free



STAINLESS STEEL STORAGE DRUMS

Large-volume stainless steel drums for storage and transport of powders and liquids in compliance with GMP.

- Complete with removable lid, clamp, and seal
- Two-sided handles for easy movement
- Fully welded construction for easy cleaning
- Made from 316 l stainless steel
- Sizes available: 1,000 ml – 200,000 ml

STANDARD FORCEPS

General-purpose laboratory forceps for handling samples, materials, and equipment.

- Available with sharp or blunt ends
- Various lengths available





MICRO AND ANALYTICAL BALANCES

Ultra-high accuracy balances built for applications where the smallest deviations matter, delivering repeatable results with full regulatory compliance and data integrity.

- Designed for USP conformity (Sections 41 and 1251)
- 21 CFR Part 11 compliant for regulated pharmaceutical environments
- Digital weighing auditor - record and save environmental conditions
- Large 10-inch display for clear operation and workflow guidance
- User verification via password, RFID card, fingerprint reader, facial recognition, or combinations thereof
- ReflexLEVEL System enables fully automatic balance levelling

BOTTLETOP DISPENSERS AND BURETTES

Reliable liquid handling solutions for accurate dispensing and titration in routine laboratory workflows.

- Autoclavable bottle-top dispensers
- Recirculation valve to minimise reagent loss
- Bottle-top dispensers offer a variable dispensing range from 0.2 to 100 ml
- Digital burettes available in 25 ml, 50 ml, and 100 ml versions



CENTRIFUGES

Robust centrifugation solutions for routine and advanced laboratory applications.

- Refrigerated and non-refrigerated models available
- User-friendly control interface with clear parameter display
- Adjustable speed, RCF, run time, and temperature
- Selectable acceleration and deceleration rates
- Automatic rotor recognition
- Imbalance detection with automatic safety shutdown

DENSITY METERS

High-accuracy density measurement systems for regulated laboratory environments.

- Suitable for FDA-regulated pharmaceutical, nutraceutical, and cGMP / GLP labs
- Multi-measurement capability with statistical reporting
- Full 21 CFR Part 11 compliance
- Intuitive Windows®-based interface
- Ethernet connectivity for secure network data storage
- Compliant with USP <841>, JP, BP, and EP standards



DIGITAL ELECTROMAGNETIC SIEVE SHAKER BA200N

Precision particle size analysis for dry and wet sieving applications.

- Suitable for granule densities above 0.8 g/cm³
- Compatible with Ø 60 – 203 mm sieves
- Capacity for up to 8 × 50 mm or 15 × 25 mm sieves
- Three-dimensional particle motion
- Sieving range from 20 µm to 125 mm



TEST SIEVES

Precision sieves for particle size analysis and quality control in laboratory and industrial applications.

- Diameter: 200 mm

DRY BLOCK HEATERS (INCUBATORS)

Compact, versatile heating solutions for tubes and microplates.

- Interchangeable anodised aluminium heating blocks
- External temperature probe for precise thermal control
- Digital display showing actual and set-point temperatures
- Integrated timer with counter / timer selection
- Threaded mounting point for stand attachment



GLASSWARE WASHERS

Automated cleaning solutions for consistent and efficient laboratory glassware washing.

- Compact, robust stainless-steel construction
- Digital touch-screen control interface
- Microprocessor-controlled wash programmes
- Wide range of sizes, models, and accessories available



HEATING AND COOLING THERMOSTATS

Temperature control solutions for a wide range of laboratory processes.

- Suitable for internal and external circulation
- Wide operating temperature range from -100 °C to 320 °C
- Compatible accessories and heat transfer liquids available



HEATING MANTLES

Controlled heating solutions for round-bottom flasks and larger vessels.

- Controlled and non-controlled models available
- Powder-coated aluminium or chemically resistant polypropylene casing
- Sizes to accommodate flasks from 10 ml to 5,000 ml
- Large-volume models available from 10 – 22 l
- Single or multi-place versions with 3 or 6 positions
- Optional stirring functionality



WATER ACTIVITY METER

Take the guesswork out of product safety and shelf-life testing with the Steroglass AW Life Meter.

- Accurate and repeatable analysis in 5 minutes
- Dew point sensor
- Touch-screen graphic display



WATER TESTING

Our wide range of instruments and reagents for water testing allows for both chemical and physical testing of water.

- Portable and benchtop photometers and spectrophotometers with preprogrammed test methods for water analysis supported by a wide range of reagents
- Electrochemistry meters for the determination of pH, conductivity and other key parameters for water quality testing
- Specialised equipment for Turbidity, Flocculation, Biological Oxygen Demand (BOD), Dissolved Oxygen (DO) and Colour Determination are also available

MELTING POINT APPARATUS

Accurate determination of melting points for quality control and research.

- Analogue and digital models available
- IQ / OQ options available
- Simultaneous measurement of up to three samples
- Optional printer for direct result output
- Internal storage for up to 300 melt files with video
- USB data transfer to computer



MUFFLE FURNACES

High-temperature furnaces for ashing, heat treatment, and materials testing.

- Lift or flap door designs
- Maximum temperatures up to 1100 °C, 1200 °C, or 1300 °C
- Non-carcinogenic insulation materials compliant with TRGS 619
- Chamber volumes from 1 l to 40 l
- Multiple controller options available
- Optional software for process data security

ORBITAL SHAKERS

Controlled shaking platforms for mixing and incubation tasks.

- Speed range from 0 – 800 rpm
- Cradle systems available for secure flask holding
- Multiple platform sizes available
- Accommodates a wide range of flask sizes



OVENS - UNIVERSAL

General-purpose laboratory ovens for drying, heating, and thermal processing.

- Temperature range up to +300 °C
- Natural convection or forced air circulation with quiet air turbine
- Fan speed adjustable in 10 % increments
- CE certified
- TwinDISPLAY (PLUS) models include programming software
- Optional FDA-compliant software



OVENS - VACUUM

Vacuum ovens designed for controlled drying and heat treatment of sensitive samples.

- Temperature range from ambient +5 °C to +200 °C
- Advanced control technology for precise temperature regulation
- Short heat-up times with turbo drying capability
- Noise-insulated, chemically resistant vacuum pump module
- Pump suitable for installation below the oven
- Available in 29 l, 49 l, and 101 l models
- CE certified
- Includes programming software
- Optional FDA-compliant software

OVERHEAD STIRRERS

Robust stirring solutions for low- to high-viscosity applications.

- Suitable for laboratory and industrial use
- Adjustable speeds up to 2,000 rpm
- Handles sample volumes up to 200 l
- Suitable for low, medium, and high viscosity materials
- Overload and overheating protection



PERISTALTIC PUMPS

Compact systems for fast and accurate liquid dispensing.

- High-speed filling with ± 0.6 ml accuracy
- Manual, automatic, or footswitch operation
- Adjustable volumes from 0.1 ml to 9,999 ml
- 20 customisable pre-installed programmes



pH METERS

Precision pH measurement for quality control and regulated environments.

- Suitable for QC and GLP applications
- Resolution up to three decimal places
- One-, two-, or three-point calibration
- Automatic or manual buffer recognition
- Integrated data logger





PIPETMAN L OR G

Manual air-displacement pipettes for routine laboratory use.

- Fully autoclavable
- Lockable volume setting
- Adjustable tip ejector button
- Ergonomic design to reduce user strain
- Single- and multi-channel options
- Volume range from 0.1 μ l to 10 ml



PIPETMAN M

Electronic pipettes for high-throughput and repetitive pipetting tasks.

- One-button aspiration and dispensing
- Four pipetting modes: Pipette, Reverse, Repetitive, Mix
- Fill a 96-well plate in a single cycle using repetitive mode
- Single- and multi-channel options
- Volume range from 0.1 μ l to 1,200 μ l



POSITIVE DISPLACEMENT PIPETTES

Accurate pipetting for challenging samples.

- Suitable for viscous, corrosive, or volatile liquids
- Minimises cross-contamination
- No recalibration required
- Volume range from 1 μ l to 12.5 ml



PIPETTE FILLERS

Motorised pipette controllers for fast, controlled aspiration.

- Suitable for plastic and glass pipettes (1 – 100 ml)
- Continuously adjustable speed
- Dispenses 25 ml in approximately 4 seconds
- NiMH battery provides up to 8 hours of operation
- Smooth, precise dosing control

PIPETTE TIPS

- Filter, non-filter or specialised
- Aerosol barrier tips
- Bulk or racked
- Sterile or non-sterile
- Fully traceable - quality certificates and certificates of sterilisation available



POLARIMETERS

Optical rotation measurement for regulated laboratory environments.

- Designed for FDA-regulated, cGMP, and GLP laboratories
- Six standard wavelengths
- TempTrol electronic heating and cooling
- Windows®-based user interface
- Ethernet connectivity for secure data storage
- 21 CFR Part 11 compliant
- Compliant with USP, JP, BP, and EP



VACUUM PUMPS

Reliable vacuum generation for laboratory processes.

- Options for corrosive and non-corrosive gases and vapours
- Contamination-free pumping
- High flow rate near ultimate vacuum
- Quiet, low-vibration operation
- Long diaphragm life with maintenance-free drive

VACUU·PURE SCREW PUMPS

Oil-free vacuum pumps for clean and demanding applications.

- NRTL certified
- Suitable for corrosive and non-corrosive gases
- Operating range down to 10^{-3} mbar
- 100 % oil-free and non-abrasive
- High flow rate with low vibration
- No wear parts



REFRACTOMETERS

Precision refractive index and BRIX measurement systems.

- Designed for FDA-regulated, cGMP, and GLP laboratories
- Measurement range: 1.26 – 1.70 RI, 0 – 95 % BRIX
- Dual Peltier temperature control from 10 °C to 120 °C
- Ethernet connectivity for secure data storage
- 21 CFR Part 11 compliant
- Compliant with USP, JP, BP, and EP

SAFE ASPIRATION STATION

Closed aspiration systems for safe liquid handling.

- Compact and quiet operation
- Adjustable aspiration speeds
- Compatible with a wide range of pipettes
- In-line hydrophobic filter captures hazardous aerosols
- Liquid-contact components are autoclavable



SPECTROCOLORIMETERS

Automated colour measurement for pharmaceutical analysis.

- Objective colour quantification
- Compliant with EP, USP, and CP colour standards
- Remote calibration service available
- ISO certified with GLP functionality



SPECTROPHOTOMETERS

UV / Vis spectrophotometers for pharmaceutical and biochemical analysis.

- Suitable for QC and research applications
- Double-beam optics with high stability
- Variable spectral bandwidth options
- PC software with DNA, RNA, and protein methods
- Extensive data handling and export tools
- Compliant with European Pharmacopoeia



HIGH VISCOSITY REACTORS

- Advanced lab systems for mixing and processing highly viscous materials at controlled laboratory scale
- Modular reactor platforms with high-torque stirring and customisable vessel sizes (1 – 5 l)
- Engineered for efficiency and scale



SYNTHESIS REACTOR SYSTEMS

- Fully controlled systems for developing, optimising and scaling chemical processes under precise conditions
- Flexible integrated stirring and scalable configuration (100 – 5,000 ml)
- One stand system for all vessel sizes for easy upscaling

ROTARY EVAPORATORS

Solvent evaporation systems for efficient distillation and recovery.

- Counterbalanced lift with integrated vacuum release
- Modular glassware with large cooling surface (up to 1500 cm²)
- Multiple condenser configurations available
- Ergonomic safety-focused design
- Patented volume-controlled distillation and boiling-point detection
- Wide range of glassware options for different solvents
- Fully integratable with baths, chillers, pumps, and controllers



ULTRASONIC BATHS

Ultrasonic cleaning systems for laboratory use.

- Effective removal of stubborn contaminants
- Volume range from 1.9 – 20 l
- Mechanical or digital timer options
- With or without integrated heater

VISCOMETERS AND RHEOMETERS

Systems for viscosity and rheological analysis across a wide range of samples.

- Modular design with guided user interface
- Suitable for low-viscosity liquids to stiff pastes
- Standalone or software-controlled operation
- Wide range of spindles, stands, and accessories
- Optional 21 CFR Part 11 compliance



WATER PURIFICATION SYSTEMS

Systems for producing laboratory-grade purified water.

- Combines reverse osmosis, filtration, UV, and ion exchange
- Multiple models for different purity levels and volumes
- Simple operation and maintenance
- Optional data tracking and storage



WATERBATHS

Temperature-controlled waterbaths for routine laboratory applications.

- Digital temperature control
- Operating range from 10 °C above ambient to +95 °C
- Integrated timer
- Optional shaking function
- Optional concentric-ring lids

ULTRA-TURRAX TUBE DRIVE

High-performance mixing and dispersing system for sealed tubes.

- Defined control of time, energy, and volume
- Prevents cross-contamination using disposable tubes
- Supports GLP / GMP compliance with full traceability
- Compatible with sealed and pierceable-lid tubes
- Programmable speed and duration with turbo and reverse modes
- USB interface for data storage and PC operation



VORTEX MIXER

Compact mixers for rapid sample agitation.

- Powerful motor for instant vortexing
- Continuous, touch, or timer-controlled operation
- Q-Drive™ dynamic balancing system
- Variable speed from 200 – 4,500 rpm

HOMOGENISERS

Sample preparation systems covering laboratory to industrial-scale processing.

- Sample volume range from 0.05 ml to 50,000 ml
- Ultrasonic homogenisers available (0.2 – 20,000 ml)
- Suitable for wet milling and dispersing of solids, fibres, tissues, and cells
- Easily interchangeable dispersing probes
- Rotational speed stability option for viscosity changes
- Tablet-specific homogenising probe available





STABILITY AND PHOTOSTABILITY CHAMBERS - REACH-IN

Compact chambers for ICH Q1B photostability testing.

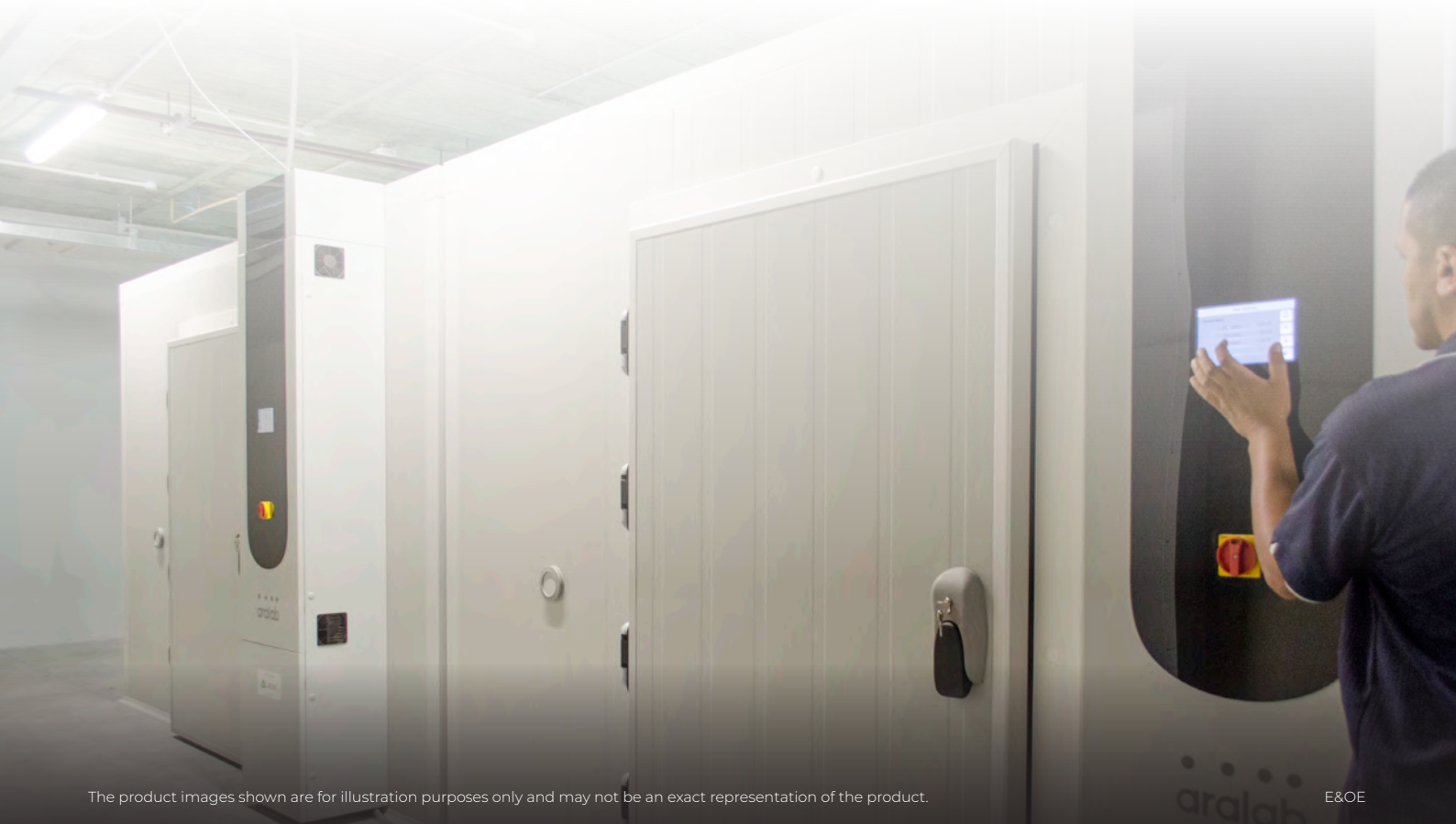
- Simulates ICH Q1B option 2 conditions
- Programmable light intensity control
- Compliant with ICH, FDA, GMP standards
- 21 CFR Part 11 compliant software
- Ready-to-use with configurable interior
- Programmable temperature, humidity, and alarm notifications



STABILITY CHAMBERS - WALK-IN

Large-scale environmental chambers for stability testing.

- ICH, GMP, WHO, and FDA compliant
- Modular designs from 5,000 l to over 40,000 l
- Temperature uniformity ± 1 °C; humidity ± 2 % RH
- 21 CFR Part 11 compliant controller and data backup
- Ethernet integration with BMS and EMS
- Installation and servicing by factory-trained engineers
- Preventative maintenance options available
- IQ / OQ / PQ validation included
- SANAS and ISO calibration certificates included



The product images shown are for illustration purposes only and may not be an exact representation of the product.

E&OE

TRADITIONAL MICROBIOLOGICAL MEDIA

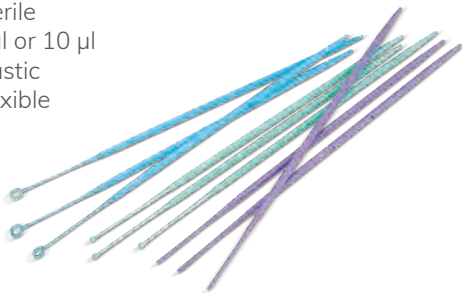
Neogen™ media and supplements are trusted for reliable bacterial culturing.

- 300+ media, diluents, broths, and supplements available
- Covers most commonly tested organisms
- Available in 500 g, 5 kg, 10 kg, and 25 kg pack sizes
- Compliant with global reference methods and standards



INOCULATING LOOPS, NEEDLES & SPREADERS

- Sterile
- 1 µl or 10 µl
- Plastic
- Flexible



PETRI DISHES

- Vented or standard
- Half plate available
- Tissue culture options available
- 65 mm or 90 mm

MEDIA PREPARATORS

Automated systems for sterile, repeatable media preparation.

- Capacity range from 1 – 50 l
- Accurate temperature control within ± 0.5 °C
- Continuous stirring during preparation and dispensing
- Integrated functions including autoclaving, homogenising, and waterbath operation
- Supports traceability and batch consistency



PETRI DISH FILLER

Automated filling and stacking system for microbiology workflows.

- Produces up to 440 plates in 30 minutes
- Integrated peristaltic pump for accurate dispensing
- Built-in Peltier cooling reduces condensation and speeds solidification
- Reduces contamination through minimal manual handling
- Compatible with automated media preparators



TUBE AND BOTTLE FILLER

Automated filling system for microbiology laboratories.

- Fills up to 1,000 tubes per hour
- Multiple rack configurations supported
- High dispensing accuracy from 5 ml
- Interchangeable nozzle options
- Autoclavable racks and stainless-steel surfaces
- USB, printer, and LIMS-compatible for traceability

AIR SAMPLER

Designed for efficient, traceable air sampling in regulated environments.

- Flow rates of 100 l / min or 200 l / min for 90 mm petri dishes or contact plates
- Bluetooth connectivity for seamless data transfer
- IP65-rated dust and water protection
- Supports GMP / GLP-compliant, reliable sampling



ANAEROBIC WORKSTATIONS

Designed for reliable anaerobic handling across a wide range of laboratory workflows.

- Capacities from 200 to 1,000+ × 90 mm petri dishes, with multiple airlock sizes and single plate entry systems
- Patented oval instant-access ports, with versions offering integrated HEPA filtration
- Single-, dual- or three-gas configurations for flexible, economical operation
- Optional Automatic Gas Changeover Unit to ensure uninterrupted gas supply

PRECISION BALANCES

High-accuracy precision balances designed for demanding laboratory environments where reliability, compliance and quality control is crucial

- Digital weighing auditor - record and save environmental conditions
- Large 10-inch display for clear, intuitive operation
- Sealed design protects the weighing sensor and electronics from chemicals, water, dust and physical damage
- 21 CFR Part 11 compliant



AUTOCLAVES

Reliable steam sterilisation systems designed for routine laboratory and industrial applications, with flexible configurations to suit different workflows.

- Compliant with local and international pressure equipment standards
- Available in bench-top or floor-standing models
- User-friendly control panel with preset and customisable sterilisation cycles
- Integrated safety features for dependable operation
- Optional extras include baskets, printers, temperature sensors, data logging and automatic water supply options



STERILISATION MONITORING

Tools designed to ensure effective sterilisation and maintain compliance in laboratory and production environments.

- Provides visual or scientific confirmation of sterilisation success
- Helps prevent contamination and ensure regulatory compliance
- Options include indicator strips, integrators, biological, and chemical indicators

AUTOCLAVE TAPE

Self-adhesive sterilisation indicator tape featuring heat-sensitive chemical indicators that change colour when exposed to the appropriate temperature and pressure, confirming that the sterilisation process has been completed.

- 25 mm x 50 metre roll
- 12 mm x 50 metre roll



AUTOCLAVE BAGS

- Made from LDPE granules extruded to 65 µm film thickness
- Standard, double and heavy duty

BIOSAFETY CABINETS

Certified containment solutions designed to protect operators, samples, and the laboratory environment.

- Compliant with international standards (EN 12469 / NSF49)
- Real-time monitoring of airflow and critical parameters
- Advanced safety features with audible and visual alarms
- High-efficiency HEPA / ULPA filtration for optimal containment
- User-friendly interfaces (LCD or touchscreen)



COLONY COUNTER

Automated colony counting and antimicrobial susceptibility testing with high analytical precision.

- Automated measurement of inhibition zones for AST workflows
- High-resolution imaging for accurate, reproducible results
- Advanced software for rapid screening and data analysis
- Supports early-stage drug discovery and antibiotic development
- Enables reliable detection of subtle antimicrobial activity differences

GRAVIMETRIC DILUTER

Fast and accurate gravimetric dilution for routine and high-throughput workflows.

- Precise dilution accuracy greater than 99 %
- Patented vertical weighing system for enhanced stability
- Adjustable feet with integrated spirit level
- Lightweight design (6.9 kg) for easy repositioning
- Durable stainless-steel housing for easy cleaning
- Supports up to four pumps
- Accessories available including reconnectors and adaptors



LAMINAR FLOW CABINETS

Clean-air workstations for aseptic and particle-sensitive processes.

- ISO 14644-1 Class 5 clean airflow
- H13 HEPA exhaust filtration (99.99 % @ 0.3 μm)
- ULPA filter options available
- Integrated lighting designed to reduce eye strain
- Optional antimicrobial coating and 316 stainless-steel work surfaces
- Wide range of sizes and configurations available



HOMOGENISER

Silent, efficient blending for standardised sample homogenisation.

- Adjustable paddles for different sample types
- Pendular mixing system for consistent blending
- Compact, ergonomic design (14 kg)
- Silent, vibration-free operation
- Intuitive user interface
- Data export via USB with LIMS integration for full traceability

HOMOGENISER BAGS

Homogeniser bags are engineered to deliver reliable, contamination-free sample preparation across microbiology, pharmaceutical, and life science applications.

- A perfect solution for ISO 14001 registered labs and those looking to implement sustainability practices
- Various autoclavable bag sizes (ranging from 5 ml to 3,750 ml)



HOTPLATE STIRRERS

Combined heating and stirring systems for routine laboratory use.

- Coated aluminium or chemically resistant ceramic plates
- Stirring capacity up to 20 l
- Maximum heating temperature up to 500 °C
- Single or multi-position models available with up to 15 places



MAGNETIC STIRRER BARS

High-quality stirrer bars for controlled mixing of liquids and solutions in laboratory experiments.

- Guaranteed inert and leak-free
- Isostatically moulded in pure, FDA-approved PTFE
- Individually polished for long-term cleanliness
- Retriever also available

HOTPLATE MAGNETIC STIRRERS

Reliable stirring with or without heating (up to 500 °C).

- Coated aluminium alloy, stainless steel, or chemically resistant ceramic top options
- Adjustable speed range from 50 – 2,000 rpm
- Maximum stirring capacity of 30 l
- Single or multi-position models with up to 15 places





INCUBATORS

Compressor-cooled

Temperature-stable incubation for controlled laboratory applications.

- Temperature range from -12 °C to 60 °C (model dependent)
- Precisely regulated temperature control without power-intensive bursts
- Includes programming software
- Optional FDA-compliant software

Peltier-cooled

Energy-efficient incubators with precise temperature regulation.

- Temperature range from 0 °C to 70 °C
- Peltier technology reduces operating costs by up to 90 %
- Optional lighting for day / night simulation on PLUS models
- TwinDisplay (PLUS) versions include programming software
- Optional FDA-compliant software

Standard

Reliable incubation for routine laboratory applications.

- Setting temperature range: +20 to +80 °C
- Working temperature range: at least 5 above ambient to +80 °C
- Natural convection or forced-air circulation
- Adjustable fan speed in 10 % increments
- TwinDisplay (PLUS) versions include programming software
- Optional FDA-compliant software

MICROSCOPY

Microscopes

Optical microscopy solutions for routine and advanced imaging applications.

- Compound and stereo microscope options
- Binocular or trinocular heads available
- Infinite plan objectives with LED illumination
- Fluorescence, darkfield, and phase contrast options
- Camera options available for image analysis



Coverslips

- Chemically resistant borosilicate 3:3 glass
- Colourless and clear, suitable for fluorescence microscopy

Slides

- Single or twin frosted
- Ground, cut or bevelled edges available



PRODUCTION & PACKAGING

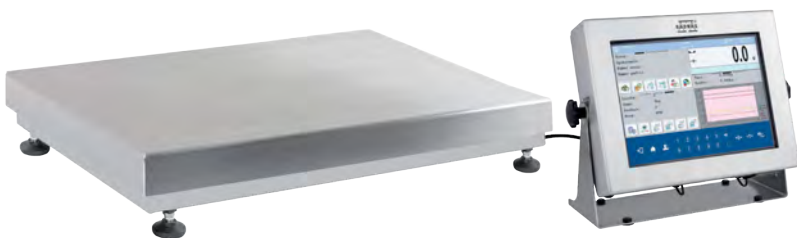


Our range of products integrates seamlessly across all related categories, ensuring a cohesive, compliant, and reliable approach to laboratory and production quality control.

CHECKWEIGHERS

In-line weighing systems for accurate control of packaged products and regulatory compliance.

- High-speed, accurate weighing for production environments
- Modular design for flexible, application-specific configurations
- Software supports compliance with relevant packaged goods regulations
- Real-time process monitoring with data storage and reporting
- Generates weighing, quantitative, and production statistics



PLATFORM SCALES - HIGH RESOLUTION

- Robust scale design
- IP67 rated - dust- and moisture-tight
- Can be cleaned and pressure-washed while ensuring high accuracy weighing

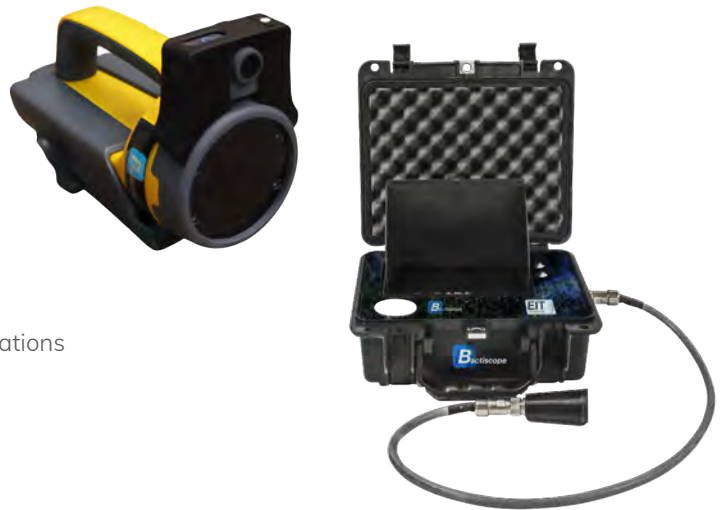
The product images shown are for illustration purposes only and may not be an exact representation of the product.

E&OE

BIOFILM DETECTION

Handheld inspection systems for rapid, non-invasive detection of surface and pipework contamination, supporting faster hygiene assessments and reduced downtime.

- Proprietary wave-alternating UV light technology
- Detects bacteria, biofilms, mould, and residues
- Enables quick visual identification without swabbing
- Ideal precursor to ATP swab testing
- Supports rapid inspections with minimal disruption to operations



HYGIENE MONITORING SYSTEM

Rapid hygiene assessment for production and laboratory environments.

- Detects ATP from microbes and residues
- Bioluminescent measurement technology
- Suitable for surface and rinse water testing
- Delivers fast, quantitative cleanliness results

FREEZE DRYERS

Freeze drying systems suited to laboratory, pilot, and production-scale applications.

- Laboratory, pilot, and production-scale models available
- Chamber and condenser isolation valve options
- Vial stoppering capability
- Cleanroom-compatible panelled front options
- SCADA software for production data acquisition (FDA 21 CFR Part 11 compliant)
- Organic solvent condenser available
- Wireless temperature probes and vial sampling device
- Capacitive pressure sensor with comparative pressure reading
- Ethernet connectivity for remote access
- Dara-Lyo software for cycle and batch data logging



The product images shown are for illustration purposes only and may not be an exact representation of the product.

E&OE



Cold storage is essential for preserving the integrity, stability, and viability of temperature-sensitive samples across pharmaceutical, biotechnology, and research environments. From routine laboratory storage to long-term biobanking, maintaining precise and consistent temperature control is critical to prevent degradation and ensure reliable analytical outcomes.



CRYOBXES

- Polypropylene (PP) or polycarbonate (PC)
- Suitable for 1 - 2 ml cryotubes
- PC suitable for storage in vapour phase of LN₂
- PP suitable for storage in ultra-low freezers
- 81- and 100-place available
- Alphanumeric indexing
- Various colours



CRYOTUBES

- Suitable for storage at -20 °C, -80 °C and in the vapour phase of LN₂
- Ultra-pure medical grade, USP class VI certified polypropylene without leachables
- Certified free of RNase, DNase & DNA and PCR inhibitors
- Barcoding service available



FREEZERS

Laboratory freezers designed for reliable temperature control and sample protection.

- Temperature ranges:
 - 25 / -10 °C
 - 30 / -10 °C
 - 40 / -20 °C
- Digital temperature display
- Acoustic and visual temperature alarms on selected models
- Spark-free options available
- Port-hole for external temperature sensors
- Optional data logger

FRIDGES

Reliable refrigerated storage for temperature-sensitive materials.

- Temperature range: 2 / 8 °C
- Digital display
- Acoustic and visual temperature alarms on selected models
- Solid or glass door options
- Spark-free versions available
- Port-hole for external temperature sensors
- Optional data logger



ULTRALOW TEMPERATURE FREEZERS (-86 °C)

High-capacity storage for long-term preservation of critical samples.

- Large internal capacity of 729 ℓ
- Easy-in / easy-out door latch with positive gasket seal
- Dual compressor system using CFC-free refrigerants
- Cascade cooling system with variable energy frequency control
- Improved temperature uniformity and energy efficiency
- Optional access card module for added security
- CO₂ back-up systems available



Stable temperatures. Protected products. Trusted cooling. Designed for continuous operation, industrial chillers ensure stable temperatures for production processes, cleanrooms, and temperature-controlled storage. With precise control and robust performance, these solutions help maintain product integrity, support compliance, and reduce operational risk across your facility.

ULTRACOOOL CHILLERS

Industrial chillers deliver reliable, energy-efficient cooling for pharmaceutical manufacturing and warehousing.

- Energy-efficient circulation chillers from -10 to 35 °C
- Operation via LCD remote control unit
- Compliant with the Ecodesign Directive
- Remote monitoring and maintenance
- Refrigeration technology with natural refrigerants



The product images shown are for illustration purposes only and may not be an exact representation of the product.

E&OE



Lasec® is able to design, manufacture and install laboratory furniture in facilities throughout Africa.

Conceptual Design

Our team of furniture design experts can tailor the perfect furniture to meet your project's requirements.

- ✓ Workflow optimisation
- ✓ Guidance on instrumentation placement
- ✓ 3D render of laboratory layout
- ✓ Various colours of worksurfaces, frames and cupboards available
- ✓ Specialised laboratory taps, gas and waste fittings
- ✓ Additional safety features and accessories



Delivery and Installation

Our dedicated logistics team will ensure that your furniture is efficiently shipped and delivered to your premises. Once there, it will be ready for installation and oversight by a Lasec® project manager, accompanied by a team of furniture installation specialists.



Boasting a large team of qualified engineers, located throughout South Africa and travelling weekly into the rest of Africa, Lasec® ensures a full-service package, including preventative maintenance, repairs and service level agreements. Worry-free use of all laboratory and scientific equipment in your facility is a possibility using the Lasec® expertise.

Value Added Solutions Include:

- ISO17025 SANAS accredited calibrations for volume and mass metrology
- Assistance with Good Lab Practice (GLP) and standard operating procedures in line with ISO recommendations
- Biosafety consulting service facilitated by NSF accredited engineers
- Tailor-made service contracts and preventative maintenance plans
- End-user training on correct usage and maintenance of equipment
- Facilitation of informative and practical CPD accredited training courses
- Assistance with IQ, OQ and PQ protocol completion



The product images shown are for illustration purposes only and may not be an exact representation of the product.

E&OE



**CAPE TOWN
HEAD OFFICE**

52 Old Mill Road,
Ndabeni,
Cape Town,
7405

+27 21 531 7504

JOHANNESBURG

48 Gazelle Crescent,
Gazelle Place,
Corporate Park South,
Randjiespark,
Midrand,
1685

+27 11 052 2500

DURBAN

Unit 3, Windsor
Court, Ground Floor,
AFS House, 4 Derby
Place, Derby Downs,
Westville,
3629

+27 31 702 6001

PORT ELIZABETH

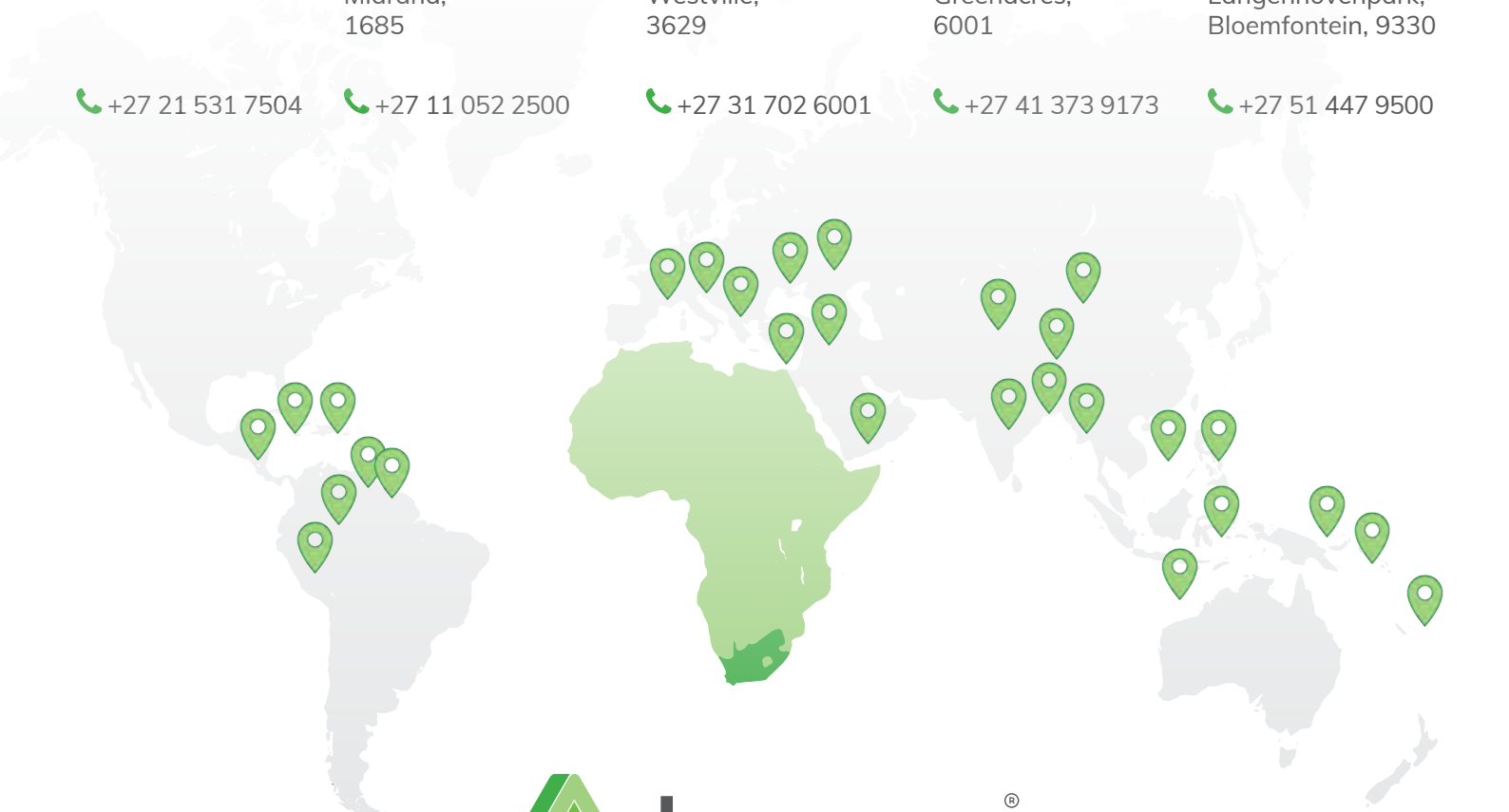
Unit 5.1, Building 3,
Ascot Office Park,
Block 7,
Conyngham Street,
Greenacres,
6001

+27 41 373 9173

BLOEMFONTEIN

Genius Loci
Building 5,
6 CP Hoogenhout
Street,
Langenhovenpark,
Bloemfontein, 9330

+27 51 447 9500



✉ sales@lasec.com

✉ international@lasec.com

🌐 www.lasec.com