



YOUR PARTNER IN LABORATORY FURNITURE DESIGN AND SUPPLY

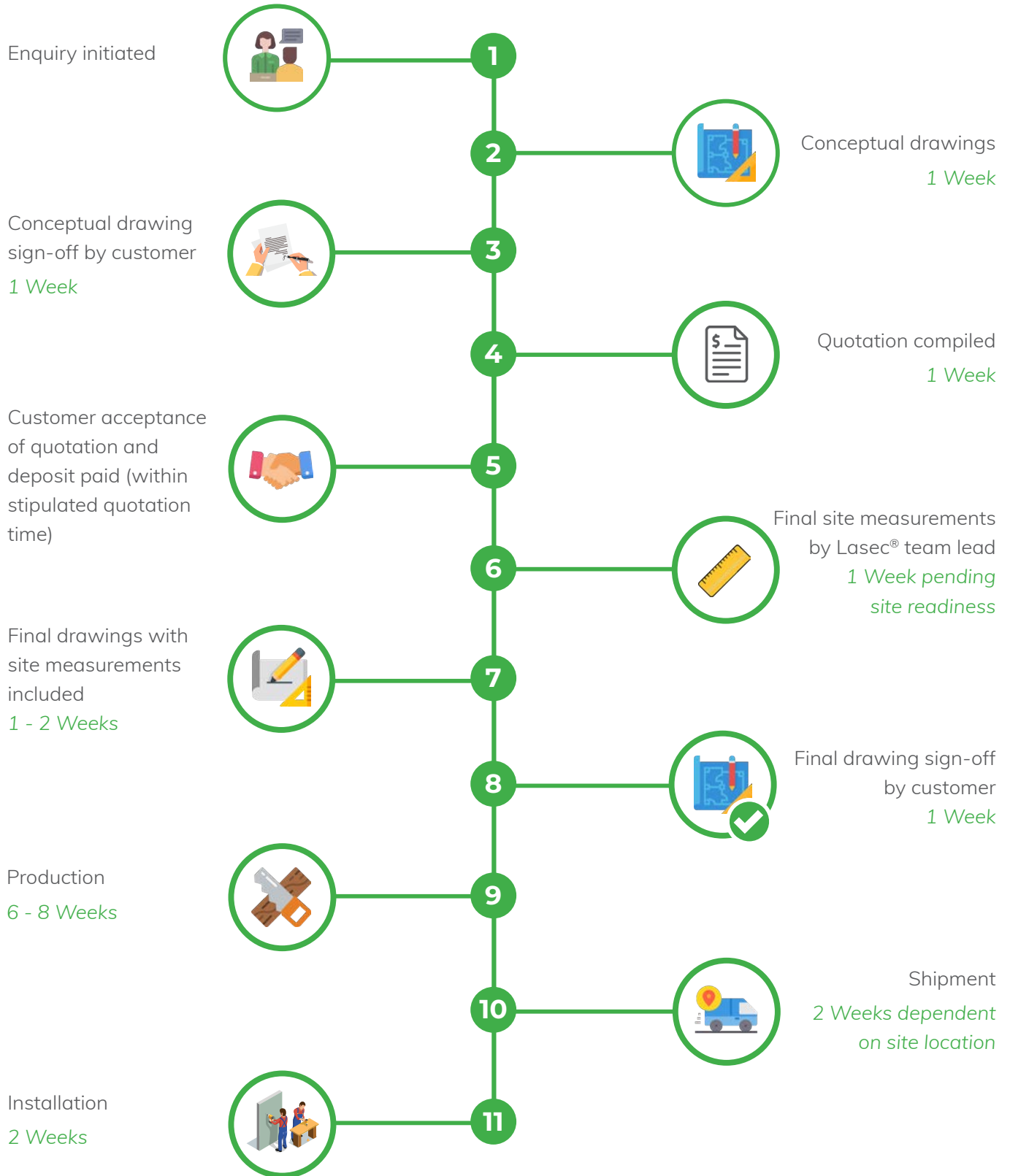
Lasec® designs and manufactures laboratory furniture for facilities across Africa. We collaborate with end-users and architects to create fully functional laboratory environments tailored to your specific applications or fields of study.



CONTENTS

Estimated Furniture Project Timeline	03
Conceptual Design	04
Frame Style Systems	06
Mobile Cupboards & Drawer Units	07
Laboratory Accessories	08
VACUU-LAN® - Local Vacuum Networks	10
Shipping Container Labs	11

ESTIMATED FURNITURE PROJECT TIMELINE



The product images shown are for illustration purposes only and may not be an exact representation of the product.

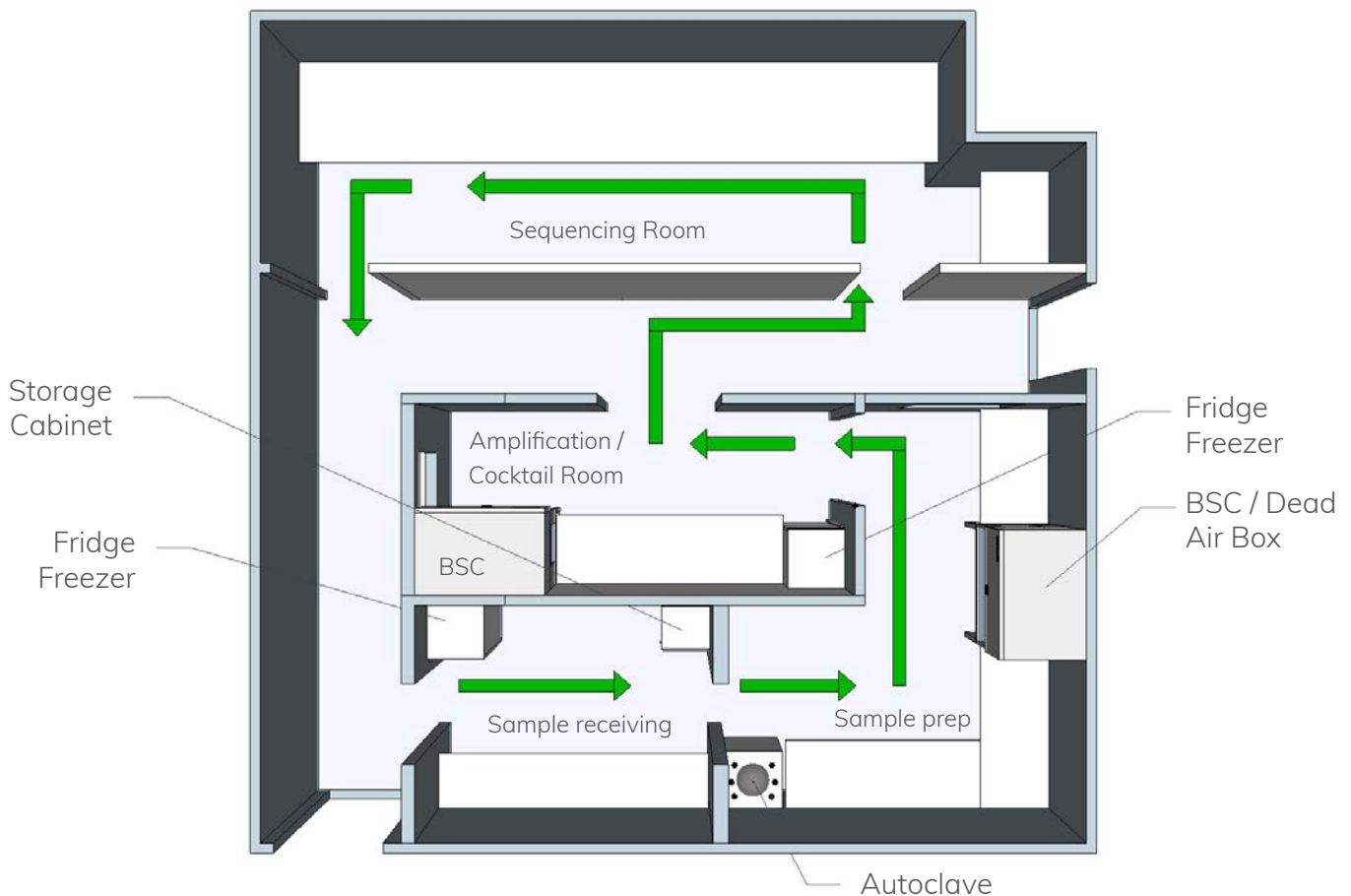
E&OE

Lasec® is able to design, manufacture and install laboratory furniture in facilities throughout Africa.

CONCEPTUAL DESIGN

Our team of furniture design experts can tailor the perfect furniture to meet your project's requirements.

- ✓ Workflow optimisation
- ✓ Guidance on instrumentation placement
- ✓ 3D render of laboratory layout
- ✓ Various colours of worksurfaces, frames and cupboards available
- ✓ Specialised laboratory taps, gas and waste fittings
- ✓ Additional safety features and accessories



DELIVERY AND INSTALLATION

Our dedicated logistics team will ensure that your furniture is efficiently shipped and delivered to your premises. Once there, it will be ready for installation and oversight by a Lasec® project manager, accompanied by a team of furniture installation specialists.

Lasec® laboratory furniture incorporates FENIX NTM™ as an innovative material.



FENIX NTM™ THIN

Recommended for laboratory offices and schools:

- 0.9 mm FENIX NTM™ on a 32 mm substrate
- Cost-effective
- Scratch, dry heat and impact resistant

FENIX NTM™ SOLID

Recommended for demanding laboratory areas:

- 12 mm solid core composed of kraft paper impregnated with thermosetting resins
- High-resistance to acid solvents and other chemicals
- Scratch, dry heat and impact resistant
- Enhanced anti-bacterial properties



ANTI-VIBRATION TABLES

Stable surfaces required for specific laboratory balances reduce interference during sensitive measurements.

OTHER MATERIALS AVAILABLE:

SOLID SURFACES AND ENGINEERED STONE

Giving us the ability to deliver intergrated splashbacks and sinks.

GRANITE

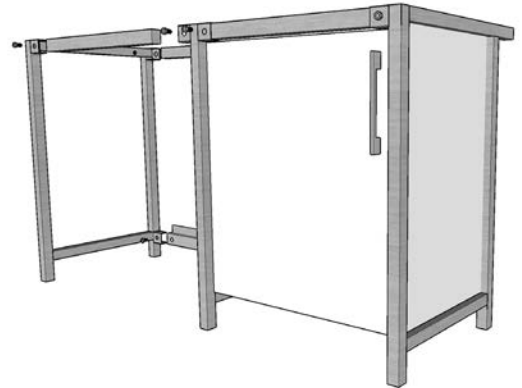
As incorporated into anti-vibration tables for balances to ensure accurate weighing.

FRAME STYLE SYSTEMS INCORPORATING CUPBOARDS AND DRAWERS

Lasec® can provide you with three different styles of cabinetry. Our ranges come equipped with soft close 110° hinges and full extension soft close runners for all drawer units.

CRICK RANGE

- ✓ Optimise available laboratory space using modular design
- ✓ Easy cleaning and prevention of water damage in the event of a spill or flooding
- ✓ Capable of supporting heavy instrumentation



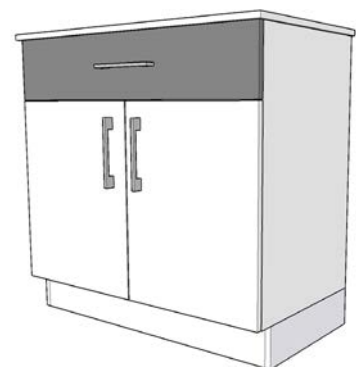
BRUNEL RANGE

- ✓ Flexibility: Utilise the space available for different tasks
- ✓ Adjust your workspace quickly and easily to meet requirements
- ✓ Easy to move around
- ✓ In addition, the Brunel Range offers mobile frame system work benches to increase workspace when required.

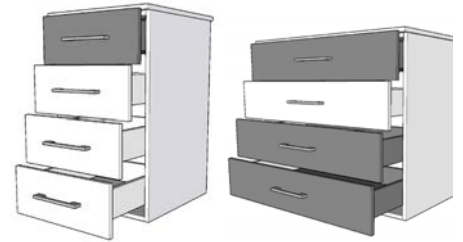
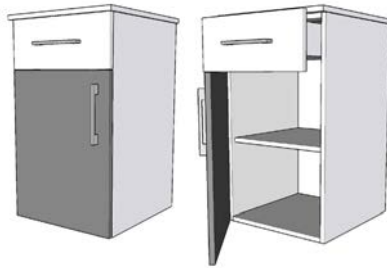
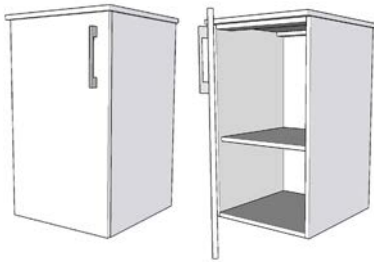


DALTON RANGE

- ✓ Cost-effective and easy installation
- ✓ Easy access to plumbing, electrical and gas supply services via a service channel



CRICK RANGE CUPBOARDS (IN FRAMING)



SINGLE DRAWER CABINETS

MULTIPLE DRAWER CABINETS

BRUNEL RANGE CUPBOARDS (WITH WHEELS)

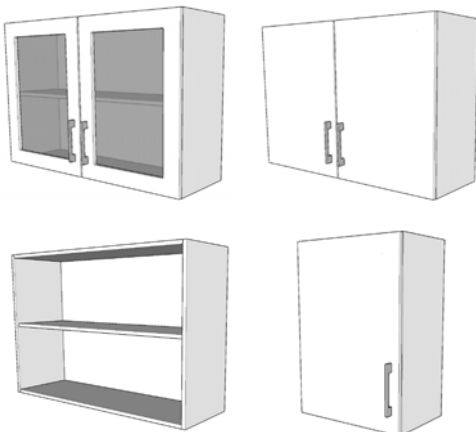


SINGLE DRAWER CABINETS

MULTIPLE DRAWER CABINETS

DALTON RANGE CUPBOARDS

WALL CABINETS



TALL CUPBOARDS

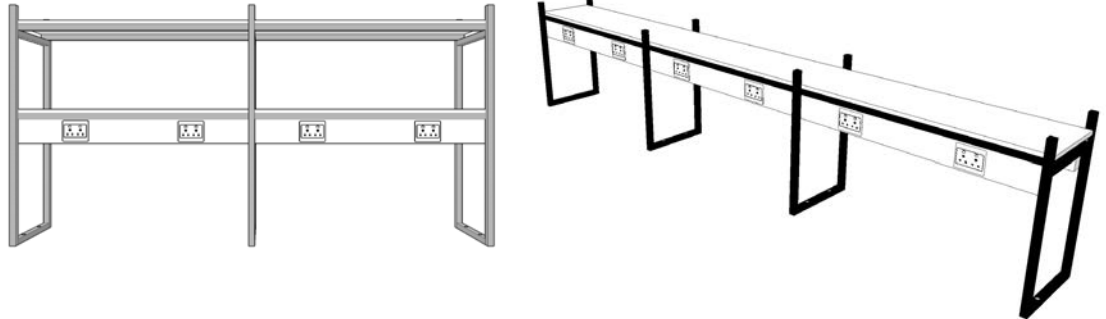


The product images shown are for illustration purposes only and may not be an exact representation of the product.

E&OE

LABORATORY ACCESSORIES

REAGENT
SHELVES



MOBILE
BENCHES



LABORATORY WORKBENCH EQUIPPED WITH REAGENT SHELVES INCLUSIVE OF ELECTRICAL TRUNKING



The product images shown are for illustration purposes only and may not be an exact representation of the product.

E&OE

LASEC® LABORATORY GRADE WATER TAP RANGE



Mixer tap



Cold water tap



Cold water tap



Elbow operated
3-way tap

GAS FITTINGS



180° double
spout gas tap



Single spout
gas tap

DRYING RACK

Laboratory glassware drying rack, with 52 removable pegs. Constructed out of polycarbonate.



EYEWASH STATION

Available in the bench mount or wall mount version. Elbow operated epoxy coated eyewash stations.



SAFETY SHOWER

A safety shower available as pedestal or lever activated. Stainless steel and epoxy coated versions available.

POLYPROPYLENE LABORATORY SINK SET

Set includes:

- 1 x Sink
- 1 x Waste fitting
- 1 x Bottle trap
- 1 x Plug



VACUU·LAN® - LOCAL VACUUM NETWORKS

VACUU·LAN® vacuum networks supply vacuum to multiple workstations with a single vacuum pump. They are an economical and space-saving solution for laboratories that require multiple points-of-use while eliminating the drawbacks of a building-wide vacuum system. The modular design makes networks easy, fast, and inexpensive to install or upgrade.

SUITABLE FOR EVERY LABORATORY

The individual, laboratory specific approach makes VACUU·LAN® the right solution for every laboratory.

EXPANDABLE AT ANY TIME

The system can be expanded easily. If requirements change, each vacuum port can be changed or moved separately.

SUITABLE FOR NEW CONSTRUCTION, RENOVATION OR RETROFITS

VACUU·LAN® modules can be surface mounted, installed in furniture, or wall-mounted, as needed. It provides the flexibility to integrate with new laboratory furnishings, retrofit into existing laboratories, or enable easy expansion of established networks.



CHEMICALLY RESISTANT COMPONENTS AND VACUUM PUMPS

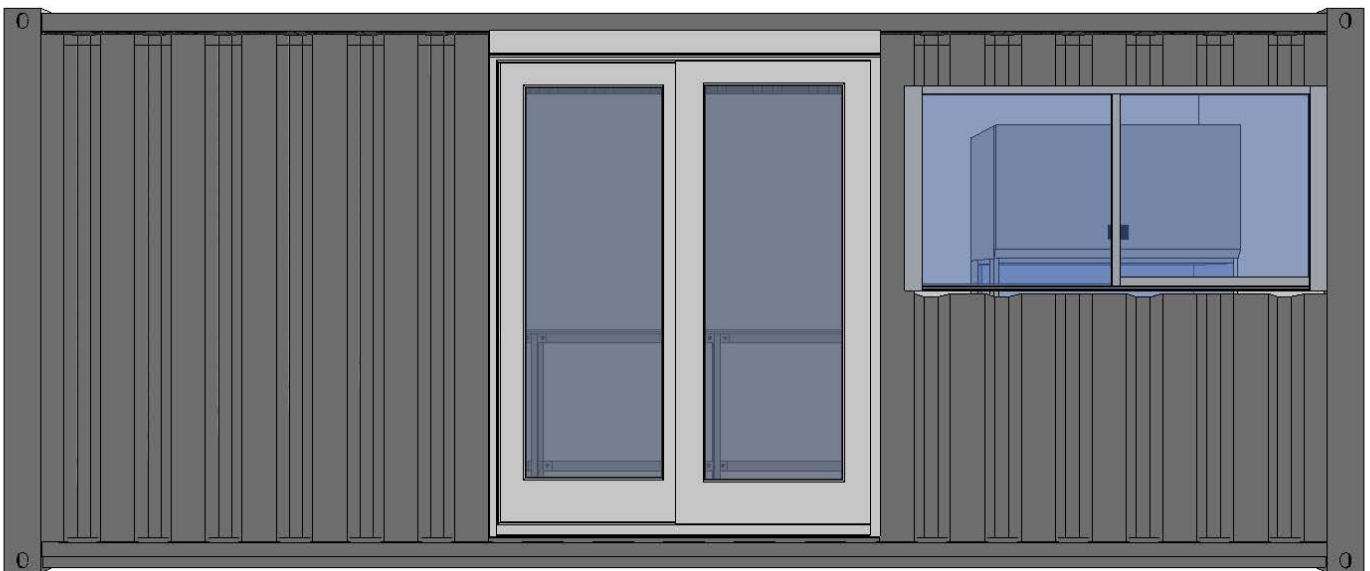
VACUU·LAN® networks use flexible PTFE tubing and PVDF compression fittings, which makes it quick and simple to install a leak-tight vacuum system. A range of chemically resistant vacuum pumps are available for your laboratory application.

Lasec® is able to supply a fully-fitted laboratory in a 6 m customised shipping container complete with thermal insulation, airconditioning, windows and door.

Laboratory furniture in this semi-mobile laboratory is designed for flexibility of application and will accommodate the following essential elements:

- **Airflow Hood:** Biological safety cabinet, laminar flow or fume hood
- **Water Purification System:** To achieve Type II laboratory grade and / or Ultrapure water
- **Laboratory benches:** Capable of handling the weight of standard laboratory instrumentation

Potential to equip with laboratory instrumentation and consumables to achieve fully functioning laboratories for Microbiology, Food And Beverage Quality Control, Water Testing, PCR testing and more.



The product images shown are for illustration purposes only and may not be an exact representation of the product.

E&OE



CAPE TOWN

52 Old Mill Road
Ndabeni
Cape Town
7405

+27 21 531 7504

JOHANNESBURG

48 Gazelle Crescent
Gazelle Place
Corporate Park South
Randjiespark
Midrand
1685

+27 11 052 2500

DURBAN

Unit 3, Windsor
Court, Ground Floor
AFS House, 4 Derby
Place, Derby Downs
Westville
3629

+27 31 702 6001

PORT ELIZABETH

Unit 5.1, Building 3
Ascot Office Park
Block 7
Conyngham Street
Greenacres
6001

+27 41 373 9173

BLOEMFONTEIN

53 President Steyn
Avenue
Westdene
Bloemfontein
9301

+27 51 447 9500

PLEASE DIRECT ALL ENQUIRIES FROM OUTSIDE SOUTH AFRICA TO:

 52 Old Mill Road, Ndabeni, 7405, Cape Town PO Box 2110, Cape Town, 8000

 www.lasec.com

 +27 21 531 7504

 sales@lasec.com

 international@lasec.com