

SAFETY LANCETS INSTRUCTIONS FOR USE



INTENDED USE

Safety lancets are designed for use in use finger and heel blood collection when performed by a qualified healthcare practitioner.

They are for single use only and should only be used by adequately trained healthcare practitioners in accordance with these instructions.

INDICATIONS

Safety lancets are designed for use in finger and heel capillary blood collection.

CONTRAINDICATIONS

There are no known contraindications associated with the use of safety lancets.

THE INTENDED PATIENT POPULATION

Adults, adolescents, and infants.

PRODUCT DESCRIPTION

The lancets are sterile, single-use, spring activated devices for skin puncture. They allow for controlled length and depth of incision. The device consists of a stainless steel needle or blade in a plastic housing. The blade / needle is covered with a yellow / white tab which acts as the sterile barrier. It retracts automatically and permanently after skin puncture or when the spring is activated.

PRECAUTIONS

- Lancets are considered medical sharps. Please refer to the policies adopted by your facility with regards to safe handling of lancets.
- Infectious diseases can be transmitted through contact with biological specimens. Always use gloves during the sample collection procedure and seek medical attention in the event of accidental exposure to biological specimens.
- Discard used safety lancets in biohazard containers approved for their disposal.
- Do not use expired lancets.
- The needle / blade will remain sterile if the protective tab is in place. Do not use the lancets if the protective tab has been removed.
- Do not attempt to reuse the lancets.
- Lancets with a puncture depth greater than 2 mm are not recommended for use on children less than one year old.

STORAGE

Recommended storage temperature is 0 - 50 °C. Store in a dry place, away from direct sunlight or excessive heat.

Report any serious incident in relation to the device to diagnostics@lasec.com

EQUIPMENT REQUIRED FOR SPECIMEN COLLECTION

- All necessary blood storage devices such as mini collection tubes or DBS cards
- Disposable medical examination gloves
- Labels for positive patient identification
- Alcohol swab to disinfect the puncture site
- Adhesive plaster / bandage
- Sharps disposal container for the containment of used lancets

Note: Select the appropriate lancet based on the patient's tissue thickness and volume of blood required:



EXPLANATION OF SYMBOLS

	Manufacturer		Sterilised using Irradiation
	Use-by date		Do Not Re-use
	Batch Code		Consult Instructions for Use
	Catalogue Number		Date of Manufacture
	CE Mark shows that TÜV SÜD was the Notified Body involved in Conformity Assessment		Keep away from Sunlight
	Temperature Limit		Keep Dry
	Caution		Medical Device
	Single Sterile Barrier System		Unique Device Identifier

SAFETY LANCETS INSTRUCTIONS FOR USE

1



Ensure the patient is comfortable, relaxed, and seated. The patient's finger should be straight but not tense to prevent stasis.

2



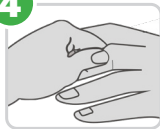
For best results use the middle finger or ring finger for sampling. Avoid fingers with rings. Clean the puncture site with the disinfectant alcohol swab and allow it to dry.

3



Twist off the protective tab.

4



Using your thumb, lightly press the finger from the top of the knuckle to the tip. This stimulates the blood flow to the sampling site.

5



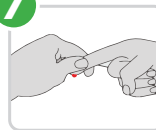
With the thumb's gentle pressure at the tip of the finger, place the lancet at the side of the fingertip. Not only is the blood flow at its best at this point, but it also causes the least pain.

6



Press the lancet firmly against the fingertip and activate the white plunger.

7



Wipe away the first 2 or 3 drops of blood. This stimulates the blood flow. If necessary, apply light pressure again until another drop of blood appears. Avoid "milking" the site.

8



After use, dispose of the device in a sharp's container.

